



## Multi-time-point data preparation robustly reveals MCI and dementia risk factors

Kaur, D., Bucholc, M., Finn, D., Todd, S., Wong-Lin, K., & McClean, P. (2020). Multi-time-point data preparation robustly reveals MCI and dementia risk factors. *Alzheimer's & Dementia: Diagnosis, Assessment & Disease Monitoring (DADM)*, 12(1), 1-13. Article e12116. Advance online publication. <https://doi.org/10.1002/dad2.12116>

[Link to publication record in Ulster University Research Portal](#)

**Published in:**

Alzheimer's & Dementia: Diagnosis, Assessment & Disease Monitoring (DADM)

**Publication Status:**

Published online: 14/10/2020

**DOI:**

[10.1002/dad2.12116](https://doi.org/10.1002/dad2.12116)

**Document Version**

Author Accepted version

**General rights**

The copyright and moral rights to the output are retained by the output author(s), unless otherwise stated by the document licence.

Unless otherwise stated, users are permitted to download a copy of the output for personal study or non-commercial research and are permitted to freely distribute the URL of the output. They are not permitted to alter, reproduce, distribute or make any commercial use of the output without obtaining the permission of the author(s).

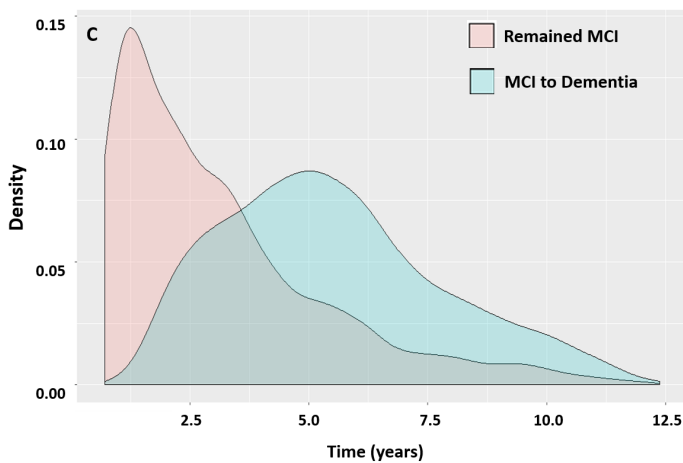
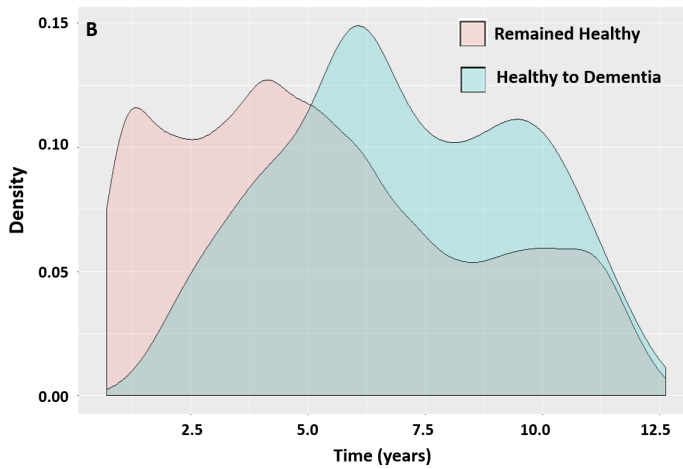
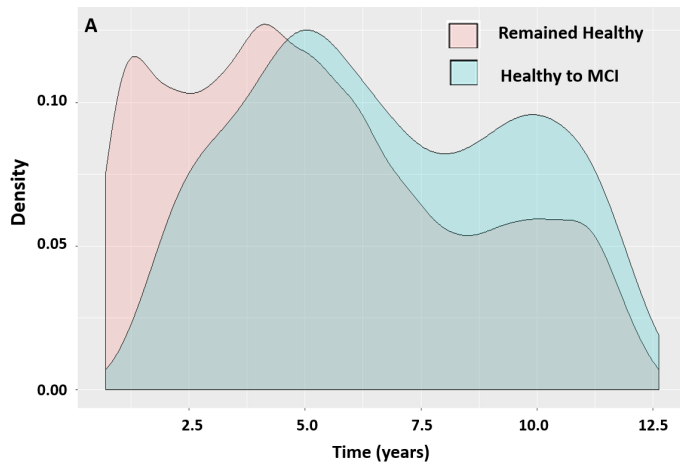
If the document is licenced under Creative Commons, the rights of users of the documents can be found at <https://creativecommons.org/share-your-work/licenses/>.

**Take down policy**

The Research Portal is Ulster University's institutional repository that provides access to Ulster's research outputs. Every effort has been made to ensure that content in the Research Portal does not infringe any person's rights, or applicable UK laws. If you discover content in the Research Portal that you believe breaches copyright or violates any law, please contact [pure-support@ulster.ac.uk](mailto:pure-support@ulster.ac.uk)

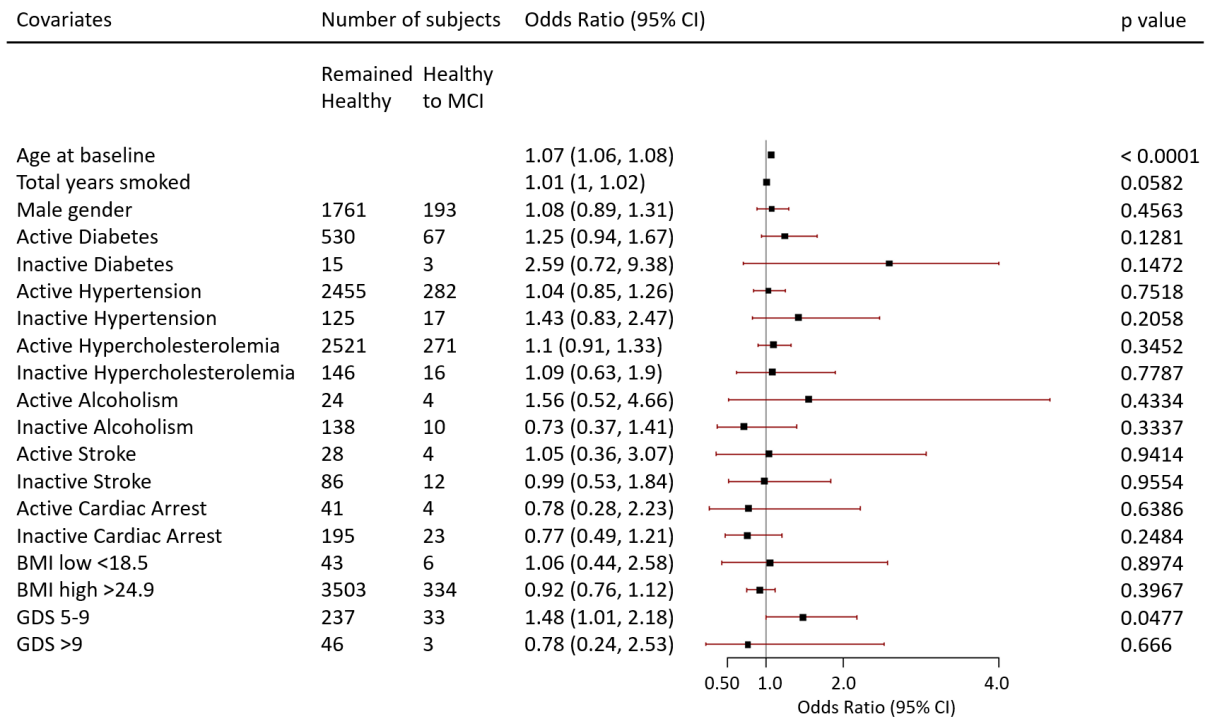
## Supplementary information

Supplementary Fig.1: Density plots of duration of progression from baseline to the first visit when a change in diagnosis was reported. (A) Remained Healthy vs. Healthy-to-MCI. (B) Remained Healthy vs. Healthy-to-Dementia. (C) Remained MCI vs. MCI-to-Dementia.

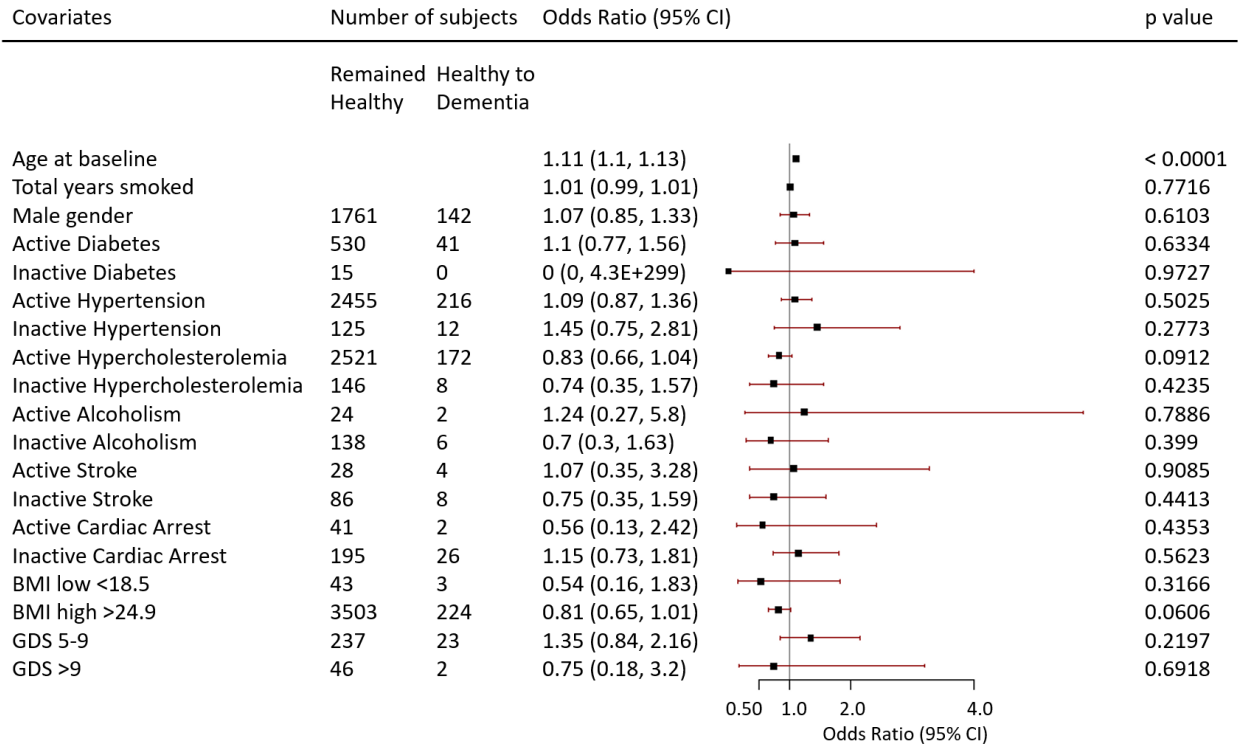


Supplementary Fig.2: Sensitivity analyses; forest plot of adjusted odds ratios for potential risk factors at baseline, associated with progression to MCI and Dementia. (A) Outcome: Remained Healthy vs. Healthy-to-MCI progression; (B) Remained Healthy vs. Healthy-to-Dementia progression; (C) Outcome: Remained MCI vs. MCI-to-Dementia progression.

**A**



**B**



**C**

