



Assisted Standing for Duchenne Muscular Dystrophy

Pedlow, K. (2019). Assisted Standing for Duchenne Muscular Dystrophy. *Cochrane Database of Systematic Reviews*, 2019(10), Article CD011550. <https://doi.org/10.1002/14651858.CD011550.pub2>

[Link to publication record in Ulster University Research Portal](#)

Published in:
Cochrane Database of Systematic Reviews

Publication Status:
Published (in print/issue): 13/10/2019

DOI:
[10.1002/14651858.CD011550.pub2](https://doi.org/10.1002/14651858.CD011550.pub2)

Document Version
Publisher's PDF, also known as Version of record

General rights
Copyright for the publications made accessible via Ulster University's Research Portal is retained by the author(s) and / or other copyright owners and it is a condition of accessing these publications that users recognise and abide by the legal requirements associated with these rights.

Take down policy
The Research Portal is Ulster University's institutional repository that provides access to Ulster's research outputs. Every effort has been made to ensure that content in the Research Portal does not infringe any person's rights, or applicable UK laws. If you discover content in the Research Portal that you believe breaches copyright or violates any law, please contact pure-support@ulster.ac.uk.



Cochrane
Library

Cochrane Database of Systematic Reviews

Assisted standing for Duchenne muscular dystrophy (Review)

Pedlow K, McDonough S, Lennon S, Kerr C, Bradbury I

Pedlow K, McDonough S, Lennon S, Kerr C, Bradbury I.
Assisted standing for Duchenne muscular dystrophy.
Cochrane Database of Systematic Reviews 2019, Issue 10. Art. No.: CD011550.
DOI: [10.1002/14651858.CD011550.pub2](https://doi.org/10.1002/14651858.CD011550.pub2).

www.cochranelibrary.com

TABLE OF CONTENTS

HEADER	1
ABSTRACT	1
PLAIN LANGUAGE SUMMARY	2
BACKGROUND	3
OBJECTIVES	4
METHODS	4
Figure 1.	6
RESULTS	6
DISCUSSION	7
AUTHORS' CONCLUSIONS	8
ACKNOWLEDGEMENTS	8
REFERENCES	9
CHARACTERISTICS OF STUDIES	11
APPENDICES	12
CONTRIBUTIONS OF AUTHORS	19
DECLARATIONS OF INTEREST	19
SOURCES OF SUPPORT	19
DIFFERENCES BETWEEN PROTOCOL AND REVIEW	19

[Intervention Review]

Assisted standing for Duchenne muscular dystrophy

Katy Pedlow^{1,2}, Suzanne McDonough^{2,3}, Sheila Lennon⁴, Claire Kerr⁵, Ian Bradbury⁶

¹Centre for Health and Rehabilitation Technologies (CHaRT), Institute of Nursing and Health Research, Ulster University, Newtownabbey, UK. ²Physiotherapy, Royal College of Surgeons in Ireland, Dublin, Ireland. ³Centre for Health and Rehabilitation Technologies (CHaRT), Institute of Nursing and Health Research, Ulster University, Newtownabbey, UK. ⁴Physiotherapy, College of Nursing and Health Sciences, Flinders University, Adelaide, Australia. ⁵School of Nursing & Midwifery, Queen's University Belfast, Belfast, UK. ⁶Frontier Science Scotland, Kincaig, UK

Contact address: Katy Pedlow, Centre for Health and Rehabilitation Technologies (CHaRT), Institute of Nursing and Health Research, Ulster University, Room 1F110, Shore Road, Newtownabbey, County Antrim, BT37 OQB, UK. k.pedlow@ulster.ac.uk.

Editorial group: Cochrane Neuromuscular Group

Publication status and date: New, published in Issue 10, 2019.

Citation: Pedlow K, McDonough S, Lennon S, Kerr C, Bradbury I. Assisted standing for Duchenne muscular dystrophy. *Cochrane Database of Systematic Reviews* 2019, Issue 10. Art. No.: CD011550. DOI: [10.1002/14651858.CD011550.pub2](https://doi.org/10.1002/14651858.CD011550.pub2).

Copyright © 2019 The Cochrane Collaboration. Published by John Wiley & Sons, Ltd.

ABSTRACT

Background

Duchenne muscular dystrophy (DMD) is the most common X-linked neuromuscular disorder. When boys with DMD reach the second decade of life, they lose their ability to walk and become wheelchair dependent. Standing devices and orthoses are considered to be an essential component in the therapy management of DMD. Clinical opinion and research from other neurological conditions highlight the proposed benefits of standing device use, however, its effect within this population is currently unknown. A review of the evidence for the use of standing devices and orthoses is necessary to inform all stakeholders, including people with DMD, clinicians, decision makers and funders, and to guide future research.

Objectives

To assess the effects of standing devices and orthoses on musculoskeletal impairments (such as pain, contracture, scoliosis development and bone density) in boys and men with DMD, and secondarily to determine their effect on quality of life, participation in activities, and patient experience (satisfaction). We also considered any adverse events associated with their use.

Search methods

We searched the Cochrane Neuromuscular Specialised Register, CENTRAL, MEDLINE, Embase, AMED, PsycINFO, CINAHL Plus, PEDro, and ProQuest Dissertations & Theses Global up to 5 September 2019. We checked references in identified trials, handsearched journal abstracts, and searched trials registries.

Selection criteria

We planned to include randomised controlled trials (RCTs) and quasi-RCTs of any model of standing device for use in DMD. The control interventions would have been any other comparison group, including no standing device, a different model of standing device, usual care, or an alternative form of assistive weight bearing.

Data collection and analysis

We used standard Cochrane methodological procedures.

Main results

Although we identified 13 potentially relevant studies, none met the inclusion criteria for this review.

Authors' conclusions

Since there were no RCTs or quasi-RCTs available to evaluate the effectiveness of standing devices in people with DMD, studies are needed to investigate the effectiveness of standing devices in this population.

PLAIN LANGUAGE SUMMARY**The use of standing devices for boys with Duchenne muscular dystrophy****Review question**

What is the effect of using standing devices in boys with Duchenne muscular dystrophy (DMD)?

Background

DMD is a condition that affects only boys. The progressive muscle wasting that occurs with the condition results in decreased walking ability and eventually, use of a wheelchair for mobility. Specialist equipment is used routinely to assist boys with DMD to stand or bear weight. Such equipment includes standing devices (e.g. frames or standing wheelchairs) and orthoses (e.g. braces or splints). We have evidence from other groups of people that standing reduces physical problems, including pain, development of contractures (fixed shortening of muscles) and curvature of the spine. Standing also strengthens bones. However, we have no evidence about the effects of the use of standing frames or orthoses by boys and men with DMD.

We searched the medical literature for studies that met our inclusion criteria. We required studies to have assessed standing devices for use in DMD compared to no standing device, a different model of standing device, usual care, or an alternative aid to enable weight bearing. Studies had to randomly allocate participants to treatment groups (these studies usually provide the highest quality evidence).

Key results and quality of evidence

We found no studies that met our inclusion criteria.

Conclusion

We found no relevant trials eligible for this review to determine the effectiveness of standing devices for boys with DMD. We need further studies to determine whether standing devices have an impact on specific health problems, participation in activities, and quality of life. Future research studies should also focus on the 'dose' of standing (i.e. the duration, frequency and amount of weight bearing) and the use of different orthoses.

The evidence is current to September 2019.

BACKGROUND

Description of the condition

Duchenne muscular dystrophy (DMD) is the most common X-linked neuromuscular disorder, affecting approximately 1 in 3300 to 6000 live male births (Deconinck 2007; Mendell 2012). The underlying causes are deletions, duplications and mutations in the dystrophin gene. With recent advances in treatment, boys with this life-limiting condition are now living into their fourth or even fifth decades. By contrast, few boys with DMD survived beyond their early twenties in the past. Although boys may show symptoms of the condition at an early stage, most are diagnosed around the age of five years. Formal diagnosis of DMD is typically through a combination of methods, including a clinical diagnosis of progressive muscle weakness, family history and increased levels of creatine kinase in the blood (Birnkranz 2018a). To provide a definitive diagnosis, genetic testing via blood sampling is often performed, with or without a muscle biopsy (Manzur 2008).

The predominant clinical presentation is wasting of the proximal muscles, for example of the trunk, shoulder girdle, or both. Symptoms at presentation are either a delay in reaching typical motor milestones (e.g. walking), or signs such as toe walking, poor motor skills, frequent falls, difficulty climbing stairs and a waddling gait (Birnkranz 2018b). Fatigue and learning difficulties may also be present. Although symptoms are often initially mild, there is a rapid physical and functional decline due to progressive muscle wasting (Kohler 2009). Once boys reach the second decade of life, they lose their ability to walk, and become wheelchair dependent (Kinali 2007). At this time, a number of significant and complex secondary comorbidities are often associated with the condition. These include the development of muscle contractures, osteoporosis, scoliosis, weight gain and respiratory complications, such as impaired pulmonary function (Birnkranz 2018b). All of these comorbidities can potentially be managed. Effective management of the condition and its comorbidities is required to enhance quality of life for these children and their families.

Description of the intervention

Assisted standing involves using a device to help place load through a person's feet. Boys and men with DMD achieve assisted standing via two main methods: standing devices (including standing frames, standing wheelchairs and tilt tables) and orthoses. For the purposes of this review, orthoses will only include hip-knee-ankle-foot orthosis (HKAFO), knee-ankle-foot orthoses (KAFO), and standing shells. The two methods can be used both within the therapy setting and in daily life in school or at home. Standing devices and orthoses provide a stable mechanical support for weight bearing in supine, prone or upright positions, depending on the device chosen; however, a precise and timely evaluation of individual needs is required to select the most appropriate design of standing device, orthoses, or both. One survey of therapists reported that 68% of them prescribed standing frames for people in the non-ambulant stage of DMD (Eagle 2002). Traditionally, assisted standing devices are prescribed for non-ambulant DMD. However, their use has been studied in both ambulant and non-ambulant children aged 5 to 15 years of age (Taktak 1995).

Although there is a lack of conclusive evidence for the use of standing devices in DMD, clinical opinion and research from other neurological conditions (such as cerebral palsy), highlight the proposed

benefits (Caulton 2004; Pin 2007; Rivi 2014). These benefits include preservation of muscle length and range of joint movement via the stretch that occurs during standing (predominately of the hip and lower-limb muscles) (Gibson 2009), delayed onset of scoliosis, increased bone density (thereby reducing the risk of fractures) (Pope 2007), fewer muscle spasms and better respiratory function (including voice control) (Glickman 2010). Research on standing for other conditions has also suggested improved circulation, digestion (Paley 2008), and bowel and bladder function (Taylor 2009).

Clinical opinion on standing indicates other benefits, including pressure relief (which improves skin integrity), improvement of well-being and better sleep. However, these reported benefits have not been systematically identified.

Standing devices are considered to be an essential component of the therapy management of DMD (both physiotherapy and occupational therapy). Various other therapy techniques for DMD are used alongside standing devices and are supported by research, including massage and stretching and the use of adaptive equipment as the disease progresses (Birnkranz 2018b). The use of standing devices significantly increases once the ability to walk has been lost, in order to maintain standing (Umphred 2013).

Access to the intervention

Access to neuromuscular services varies greatly depending upon the person's location and age (paediatric versus adult services). Physiotherapy and standing devices are typically provided during childhood, but these services may now be required throughout adolescence and adulthood, due to the increased life expectancy of people with DMD.

How the intervention might work

Standing devices (supine standing frame, prone standing frame, upright standing frame, tilt table, and standing wheelchair)

A supine standing frame requires the person to lie down on the frame before it is moved into a more upright position. The clinical advantage of a standing frame is its use with those who lack anti-gravity strength in their upper trunk, in addition to a reduction in the amount of weight bearing. A prone standing frame places the person in a forward tilt. This position encourages head control and anti-gravity use of muscles in the upper trunk. A further clinical advantage of this frame is the ability to alter the amount of weight bearing by changing the angle of tilt of the frame. This is important for people with reduced leg strength or contractures. Providing an angle of tilt reduces the amount of leg strength and joint range of movement required to maintain the position. An upright standing frame places the person in an almost vertical position to reflect a natural standing position. This has the benefit of achieving maximum weight bearing, which is important for bone density (Umphred 2013).

A tilt table is very similar to a supine standing frame; however, the person is placed on a large flat mat with straps across the chest, hips and knees, rather than the more flexible fit of a supine standing frame. A tilt table provides similar clinical benefits to a supine standing frame, but is less likely to be used in a home or classroom setting because of its size.

A standing wheelchair allows the person to complete functional tasks in a standing position. The wheelchair can be either manually or power operated, and the height at which the person stands can be adapted depending on the patient's current standing ability, taking into account any reduction in muscle length or range of joint motion.

Orthoses

A HKAFO is a device that supports the entire lower limb. This is achieved by providing support points at the hip, knee, ankle and foot by either a metal or plastic design, in addition to a soft material, for example leather, which is used for point-of-skin contact.

A KAFO is a device that supports the knee, ankle and foot with the aim of maintaining alignment in the lower limb. In a similar manner to the HKAFO, the KAFO is shaped to match the person's limb, either with a metal or plastic design and a soft material. These orthoses are reported to increase the length of time assisted walking and standing can be maintained in DMD (Bakker 2000).

Standing shells are more commonly used by people with cerebral palsy, to create optimal alignment of the body. A plaster cast is developed to encase the legs and back. A polyethylene plastic mould is then created from the plaster cast. The plastic mould (standing shell) is placed onto the person and secured in place by leather straps. The standing shell allows people to complete functional tasks in a standing position.

Variation in standing device and orthoses design and selection is thus apparent, as is variation in the length of time spent using the device. Currently there is insufficient evidence to determine the optimal dose for standing with standing devices and orthoses.

The presence of orthostatic hypotension, healing fractures and severe contractures can prevent the use of standing devices (Holland 2006).

Potential limitations of the intervention

In this population, although there are many potential benefits to using standing devices, it is important to recognise that there may also be a number of possible disadvantages. These include the time and commitment required on the part of the person and their family to complete the intervention, and the possible associated financial costs to both the family and service provider, in terms of provision of equipment and adequately trained staff. Clinical disadvantages associated with the use of standing devices include hypotension and boredom.

One aspect in determining the potential use of standing frames is the degree of lower-limb contractures. Standing devices cannot typically accommodate severe flexion contractures of the lower limbs; additionally, weight bearing through the feet would result in excessive abnormal forces being exerted through the lower limbs, thus making a supported-standing programme inappropriate. Contractures are more likely to be severe in individuals who have been long-term wheelchair users, due to the length of time spent in sitting postures and the consequent increased risk of contracture of the hip flexor and hamstring musculature.

Why it is important to do this review

Despite clinical descriptions of the potential benefits of standing devices and orthoses for this population and research in other pop-

ulations, there is no standardised approach to use of these devices in people with DMD, and a lack of unequivocal evidence of their effectiveness (Eagle 2002). An expert consensus on the management of DMD commented that the use of standing devices and orthoses is logical, but not evidenced, and highlighted that there is no consensus regarding how long they should be used for, or how frequently (Dooner 2007).

One main issue in obtaining evidence for the use of standing devices is that they may be used for many different reasons, so studies may focus on different potential benefits, adding to the complexity of achieving consensus on their use. It is also necessary to assess whether the potential advantages of assisted standing outweigh the previously described potential disadvantages in terms of time, costs and clinical outcomes.

There is a clear need to review the evidence for the use of standing devices and orthoses in order to inform all stakeholders better, including boys and men with DMD, clinicians, decision makers and funders, and to guide future research.

OBJECTIVES

To assess the effects of standing devices and orthoses on musculoskeletal impairments (such as pain, contracture, scoliosis development, and bone density) in boys and men with DMD, and secondarily to determine their effect on quality of life, participation in activities, and patient experience (satisfaction). We also considered any adverse events associated with their use.

METHODS

Criteria for considering studies for this review

Types of studies

We considered randomised controlled trials (RCTs) and quasi-RCTs for inclusion. We included studies reported in full text, published as an abstract only, or unpublished. We included data from non-randomised studies in the discussion, but not in the results section of the review. We placed no restrictions on date or language of publication.

Types of participants

We included both men and boys of any age with a confirmed diagnosis of DMD.

If a study had included only a subset of participants with DMD, we would have included it only if it measured the primary outcome for the DMD subset.

Types of interventions

We considered trials that compared any model of standing device or orthoses (HKAFO, KAFO or standing shell) with any other comparison group, including no standing device, a different model of standing device (for example a tilt table versus a standing frame), usual care, or an alternative form of assistive weight bearing. Standing devices included all types of standing frames, tilt tables and standing wheelchairs. We considered the following orthotic devices: HKAFO, KAFO and standing shells. We included any trial that compared one model of standing modality to another. We allowed co-interventions in cases where they were provided to each group equally.

Types of outcome measures

We did not use the outcomes listed here as eligibility criteria for this review, but identified them as outcomes of interest within included studies.

Primary outcomes

1. Change in range of joint movement (goniometry; [Pandya 1985](#)) in the short term (baseline to 3 months), medium term (3 to 12 months) and long term (over 12 months).

Secondary outcomes

1. Musculoskeletal impairment: measured using validated scales in the short term (baseline to 3 months), medium term (3 to 12 months) and long term (over 12 months). Musculoskeletal impairment included pain (visual analogue scale (VAS); [McCormack 1988](#)).
2. Scoliosis: measured by scoliometer ([Bunnell 1984](#)), or by Cobb's angle on X-ray ([Wills 2007](#)). Change in value from baseline to over 12 months.
3. Bone density: measured by dual-energy X-ray absorptiometry (DEXA) of the lumbar spine, femoral heads, or both ([Mazess 1990](#)); change in value from baseline to over 12 months.
4. Respiratory function: measured as per cent predicted forced vital capacity (FVC%); change in value from baseline to 3 to 12 months ([Phillips 2001](#)).
5. Participation: measured using validated scales such as Children's Assessment of Participation and Enjoyment (CAPE) ([King 2004](#)); change in baseline value in the short term (3 months), medium term (3 to 12 months) and long term (over 12 months).
6. Quality of life: measured using validated scales such as the Individualized Neuromuscular Quality of Life questionnaire (INQoL) ([Vincent 2007](#)), or Child Health Questionnaire (CHQ) ([Landgraf 1999](#)); measured by change in value in the short term (3 months), medium term (3 to 12 months) and long term (over 12 months).
7. Bowel function: measured by frequency of episodes of constipation ([Lo Cascio 2014](#)); measured by change in value in medium term (from baseline to 3 to 12 months).
8. Participant and family satisfaction with the intervention: assessed, for example, by self-report questionnaires; measured by change of value from baseline in the short term (3 months), medium term (3 to 12 months) and long term (over 12 months). We did not include qualitative reporting of participant satisfaction.
9. Adverse events: subdivided into any adverse events, adverse events that led to discontinuation of treatment, and serious adverse events (events that were fatal, life threatening, or required prolonged hospitalisation).

Search methods for identification of studies

Electronic searches

The Trials Search Co-ordinator searched the following databases (detailed strategies are in the appendices):

1. the Cochrane Neuromuscular Specialised Register (Cochrane Register of Studies (CRS Web) 5 September 2019 (CRS Web; [Appendix 1](#));
2. the Cochrane Central Register of Controlled Trials (CENTRAL) 5 September 2019 (CRS Web; [Appendix 2](#));
3. MEDLINE Ovid (January 1966 to 4 September 2019; [Appendix 3](#));
4. Embase Ovid (1947 to 4 September 2019; [Appendix 4](#));
5. CINAHL Plus EBSCOhost (Cumulative Index to Nursing and Allied Health Literature; 1937 to 4 September 2019; [Appendix 5](#));
6. AMED Ovid (Allied and Complementary Medicine; 1985 to August week 4 2019; [Appendix 6](#));
7. PsycINFO Ovid (1806 to August 2019; [Appendix 7](#));
8. ProQuest Dissertations & Theses Global (1861 to August 2019; [Appendix 8](#)).

We also searched the Physiotherapy Evidence Database (PEDro; 1929 to September 2019; [Appendix 9](#)), the United States National Institutes of Health Clinical Trials Registry (www.ClinicalTrials.gov; [Appendix 10](#)), and the World Health Organization International Clinical Trials Registry Portal (apps.who.int/trialsearch/; [Appendix 10](#)).

We searched all databases from their inception to the present, and imposed no restriction on language of publication.

We identified non-randomised studies for inclusion in the discussion from the same search results.

Searching other resources

We searched reference lists of all primary studies and review articles for additional references. We search relevant manufacturers' websites for trial information ([Higgins 2011](#)).

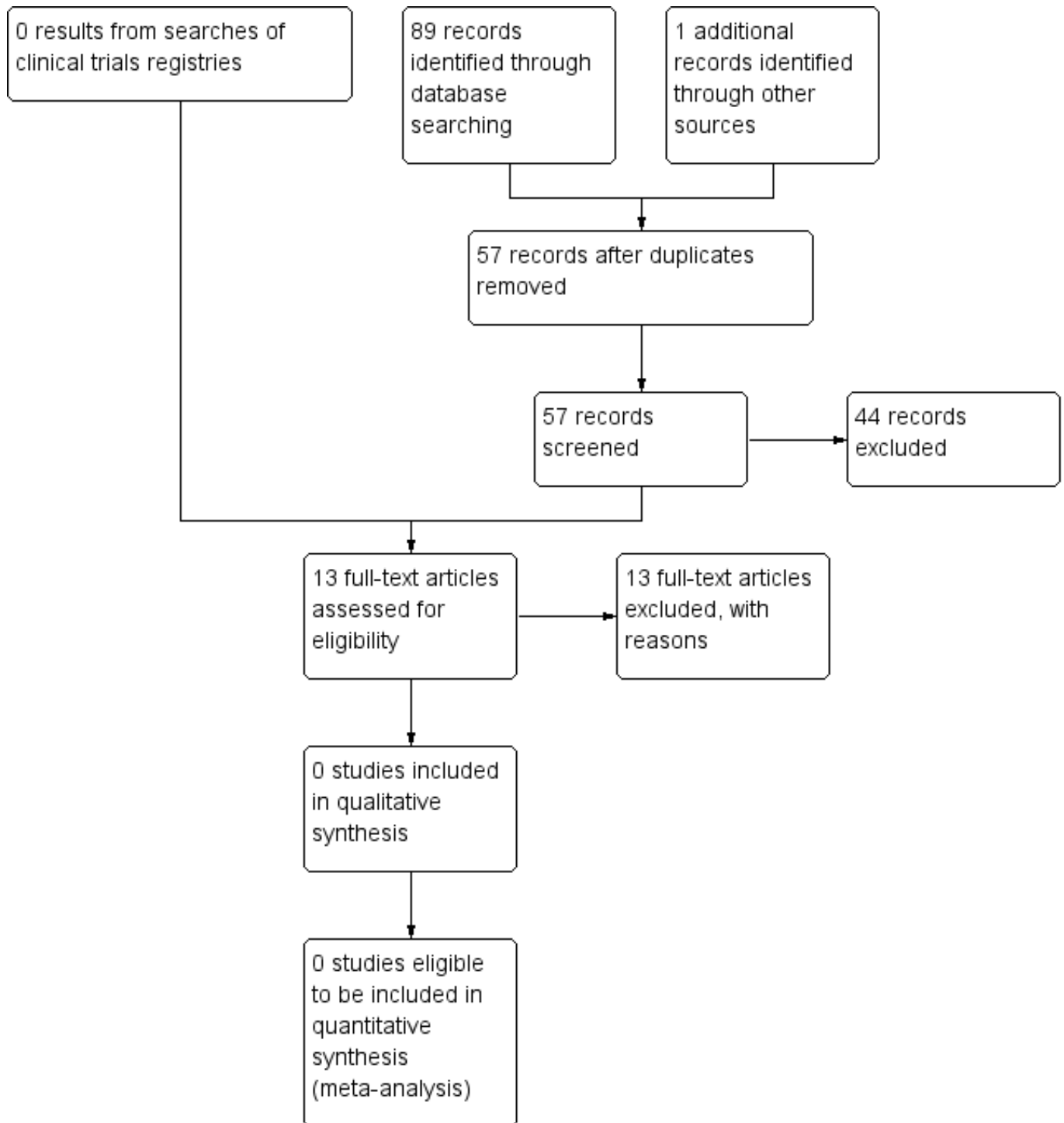
We searched grey literature to identify other studies.

Data collection and analysis

Selection of studies

Two review authors (KP, SMcD) independently screened titles and abstracts of all the studies identified as a result of the searches, and coded them as 'retrieve' (eligible or potentially eligible/unclear) or 'do not retrieve'. We retrieved full-text study reports for potentially eligible studies. Two review authors (KP, SMcD) independently screened the full texts to identify studies eligible for inclusion, and identified and recorded reasons for exclusion of the ineligible studies. There were no disagreements between the authors. We reported the selection process in sufficient detail to complete a PRISMA flow diagram ([Figure 1](#)) and 'Characteristics of excluded studies' table.

Figure 1. Study flow diagram.



No studies met the inclusion criteria for this review.

[Appendix 11](#) describes the data collection methods we will use, should studies become available in future.

RESULTS

Description of studies

Results of the search

The search identified 90 citations ([Figure 1](#)). After duplicate removal, we screened the titles and abstracts of 57 citations and excluded 44 records. We excluded studies if they were not RCTs or quasi-RCTs, if they described surgical interventions, or if DMD was

not the study population. We obtained 13 full-text studies, as it was unclear from their titles and abstracts whether or not they met the study criteria. All of these studies were non-RCTs; nine were cohort studies, one was a qualitative study, one was a review paper, one was a case series, and one was a consecutive sample. Furthermore, most did not have a control group for comparison. We found no ongoing studies. After assessment of the full-text reports, we found no studies that met the criteria for this review. Searches of the trials registries retrieved no records.

Included studies

No studies met the review's inclusion criteria.

Excluded studies

We have listed all 13 papers reviewed in full text as excluded studies, as they did not meet the inclusion criteria ([Characteristics of excluded studies](#)). Eleven of the studies did not focus on standing or include at least one outcome of interest. Two studies were intervention studies with a minimum of one outcome of interest ([Taktak 1995](#); [Townsend 2016](#)). We have described them in the [Agreements and disagreements with other studies or reviews](#) section below.

Risk of bias in included studies

No studies met the review's inclusion criteria.

Effects of interventions

No studies met the review's inclusion criteria.

DISCUSSION

Summary of main results

After completing a comprehensive search, we identified no RCTs that focussed on the use of standing devices for boys or adults with DMD.

When reviewing the full-text of the 13 excluded studies, the authors (KP, SMcD, and CK) identified a set of inclusion criteria to allow identification of studies which, in our opinion, could potentially inform future trial design. These criteria identified studies that presented experimental data, i.e. where boys or men with DMD experienced different forms of standing devices or a standing device versus control, and studies that included a minimum of one outcome of interest. We found two studies that met these criteria ([Taktak 1995](#); [Townsend 2016](#)). We have discussed them narratively below.

Overall completeness and applicability of evidence

We did not identify any RCTs that met the inclusion criteria for the review. We identified two non-RCTs that reported outcomes of interest, including range of joint movement, bone density, participation and family satisfaction ([Taktak 1995](#); [Townsend 2016](#)). Neither study included our other outcomes of interest, namely; bowel function, scoliosis, pain, quality of life, or respiratory function.

Quality of the evidence

This review did not find any studies that met the inclusion criteria. The current literature surrounding standing frames and orthoses for DMD lacks the robust methods of RCT designs. RCTs are needed to enhance the overall quality of evidence.

Potential biases in the review process

The review process did not allow for the explicit identification of potential adverse events. The main limitation of this review was the lack of RCTs.

Agreements and disagreements with other studies or reviews

This review has similar findings to other reviews on the topic of management of DMD. [Cheuk 2015](#), a Cochrane Review of surgery for scoliosis, also included no studies due to a lack of RCTs in the area. Our searches identified two non-randomised studies that presented experimental data. The evidence described narratively below is of very low-certainty, due to small sample size and lack of randomisation. It should be interpreted with caution.

Evidence from non-randomised studies

Study design, participants and interventions

The studies were non-randomised; one was a within-group comparison ([Taktak 1995](#)), the other a case series ([Townsend 2016](#)).

Both studies had very few participants: four in [Townsend 2016](#) and 26 in [Taktak 1995](#). The boys participating were aged between 5 and 15 years, which explained the great variability in their stages of disease progression. At the start of each study, there was a mixed presentation of boys who were ambulant and boys who were non-ambulant. Neither study reported whether boys had previously received, or were currently receiving, steroid treatment ([Townsend 2016](#); [Taktak 1995](#)).

The standing device used in [Taktak 1995](#) was a knee-ankle-foot-orthosis (KAFO), whereas [Townsend 2016](#) studied the effects of using a standing wheelchair.

Outcomes of interest

Both studies reported a limited number of outcomes which aligned to the specified focus of this review ([Taktak 1995](#); [Townsend 2016](#)). However, it was not clear whether the reported outcomes reflected the effects of the standing device, or natural disease progression.

Change in joint range of movement

[Townsend 2016](#) reported a change in range of joint movement for the four participants after 6 to 20 months' use of a standing wheelchair (total 47 hours to 192 hours). The study reported range of movement for the ankle joint (plantar flexor length), knee (popliteal angle) and hip (Thomas test position) using goniometry over a period of 6.5 to 20 months.

For hip range of movement, three boys showed improvements (ranging from 9° to 15°), with the fourth boy showing a decrease in range of movement (of 16°).

For the ankle joint, plantar flexor length was stable in three boys and decreased in one boy. Two of the boys who had a stable ankle joint range of movement had recently undergone surgery for Achilles tendon lengthening.

Knee flexor length improved in two boys (ranging from 1° to 6°) and declined in two boys (ranging from 10° to 30°)

[Taktak 1995](#) did not report change in joint movement.

Pain

Neither study reported pain as an outcome.

Scoliosis

Neither study recorded scoliosis.

Bone density

One study measured bone density, both before and after use of a standing wheelchair (47 to 192 hours' use over 6 to 12 months). The study used a DEXA scan at the lumbar spine region for all four participants (Townsend 2016).

Three boys showed a significant decrease in bone density during the study period, and one boy's bone density remained stable. Two boys showed an initial decrease in bone density between baseline and mid-intervention (four months) before returning to baseline levels at the point of intervention withdrawal (eight months). One boy had an initial decrease in lumbar spine bone mineral density from baseline to mid-intervention, which continued to decrease over the study period. This boy was the only participant who lost ambulation during the intervention period.

Taktak 1995 did not report bone density.

Respiratory function

Neither study recorded respiratory function.

Participation

One study recorded participation at eight months, using subjective methods (Townsend 2016). Types of enhanced participation included allowing access to eat breakfast with siblings (one participant), accessing the freezer more readily (three participants), ability to access higher shelves (one participant), standing to urinate (one participant) and playing catch with the dog (one participant).

The following factors limited adherence during the study: device malfunction (two participants), vacation (one participant), back pain (one participant), ankle pain (one participant), limited time (two participants), and motivation (four participants). The study reported that standing tolerance within a given session was limited due to plantar foot paraesthesia (one participant), knee or shin discomfort (three participants), low back pain (one participant), foot pressure (one participant) and leg fatigue (four participants).

Taktak 1995 did not report participation measures.

Quality of life

Neither study reported quality of life.

Bowel function

Neither study reported bowel function.

Participant and family satisfaction

One study recorded participant and family satisfaction using a study-specific questionnaire (Taktak 1995).

All eight participants reported that a modular KAFO provided a better cosmetic effect than the traditional KAFO. All participants reported little or no difference in relation to the comfort of the two

devices, and five participants reported that they preferred the modular KAFO in terms of weight. Two participants reported increased independence in relation to putting on and taking off the modular KAFO, in comparison to the traditional devices.

Adverse events

Neither study reported any adverse events.

Standard of care guidelines

The standard of care guidelines for Duchenne muscular dystrophy have recently been updated (Birnkranz 2018a; Birnkranz 2018b). These standards are based on expert consensus. These guidelines recommend the use of passive or motorised supported standing devices for prevention of contracture and deformity when standing in good alignment becomes difficult, and if contractures are not too severe to prevent positioning or tolerance (Birnkranz 2018a). Standing devices are also recommended in the early non-ambulatory stage to initiate a standing programme. The guidelines recommend using standing programmes with caution in the late non-ambulatory stage (Birnkranz 2018b).

AUTHORS' CONCLUSIONS

Implications for practice

We lack evidence from randomised controlled trials (RCTs) to evaluate the effectiveness of standing devices in boys and men with Duchenne muscular dystrophy.

Implications for research

We need further studies to investigate the effectiveness of standing devices in this population. Due to the ethical considerations of removing a standing device, it may be more appropriate to randomise to different types of standing devices. It would also be possible to use randomised controlled trial methods to determine the optimal 'dose' of standing device use, and investigate the optimum age range for the intervention. Other studies should investigate strategies to increase adherence and maintain motivation for standing programmes. Future studies should use valid and reliable outcome measures that are clinically relevant. Future studies should also include carefully designed control groups to determine which elements of the intervention are influencing the outcome, i.e. the standing device or other therapy techniques.

ACKNOWLEDGEMENTS

The review authors would like to acknowledge the Research and Development Division of the Public Health Agency (Northern Ireland) for their funding of the Cochrane Fellowship for Katy Pedlow. The Cochrane Neuromuscular Information Specialist, Angela Gunn, developed search strategies in collaboration with the review authors.

This project was supported by the National Institute for Health Research via Cochrane Infrastructure funding to Cochrane Neuromuscular. The views and opinions expressed therein are those of the authors and do not necessarily reflect those of the Systematic Reviews Programme, NIHR, NHS or the Department of Health. Cochrane Neuromuscular is also supported by the MRC Centre for Neuromuscular Disease.

REFERENCES

References to studies excluded from this review

Alemdaroglu 2014 {published data only}

Alemdaroglu I, Gur G, Bek N, Yilmaz O, Yakut Y, Uygur F, et al. Is there any relationship between orthotic usage and functional activities in children with neuromuscular disorders?. *Prosthetics and Orthotics International* 2013;**38**(1):27-33.

Bakker 1997 {published data only}

Bakker JP, de Groot IJ, de Jong BA, van Tol-de Jager MA, Lankhorts GJ. Prescription pattern for orthoses in the Netherlands: use and experience in the ambulatory phase of Duchenne muscular dystrophy. *Disability and Rehabilitation* 1997;**19**(8):318-25.

Bakker 2002 {published data only}

Bakker JP, de Groot IJ, Beelen A, Lankhorst GJ. Predictive factors of cessation of ambulation in patients with Duchenne muscular dystrophy. *American Journal of Physical Medicine and Rehabilitation* 2002;**81**:906-12.

Garralada 2006 {published data only}

Gerralada ME, Muntoni F, Cunniff A, Caneja AD. Knee-ankle-foot orthosis in children with Duchenne muscular dystrophy: user views and adjustment. *Official Journal of the European Paediatric Neurology Society* 2006;**10**:186-91.

Heckmatt 1985 {published data only}

Heckmatt JZ, Dubowitz V, Hyde SA, Florence J, Gabain AC, Thompson N. Prolongation of walking in Duchenne muscular dystrophy with lightweight orthosis: review of 57 cases. *Developmental Medicine and Child Neurology* 1985;**27**:149-54.

Hunt 1981 {published data only}

Hunt AK. Use of knee-ankle-foot orthoses for transfers of nonambulatory boys with Duchenne muscular dystrophy. *Physical Therapy* 1981;**61**(1):51.

Katz 2006 {published data only}

Katz DE. The use of ambulatory knee-ankle-foot orthoses in paediatric patients. *Journal of Prosthetics and Orthotics* 2006;**18**(3S):192-7.

Kinali 2007 {published data only}

Kinali M, Main M, Eliahoo J, Messina S, Knight RK, Lehovsky J, et al. Predictive factors for the development of scoliosis in Duchenne muscular dystrophy. *Official Journal of the European Paediatric Neurology Service* 2007;**11**:160-6.

Main 2006 {published data only}

Main M, Mercuri E, Haliloglu G, Baker R, Kinali M, Muntoni F. Serial casting of the ankles in Duchenne muscular dystrophy: can it be an alternative to surgery?. *Neuromuscular Disorders* 2007;**17**:227-30.

Rodillo 1988 {published data only}

Rodillo EB, Fernandez-Bermejo E, Heckmatt JZ, Dubowitz V. Prevention of rapidly progressive scoliosis in Duchenne

muscular dystrophy by prolongation of walking with orthoses. *Journal of Child Neurology* 1988;**3**:269-74.

Taktak 1995 {published data only}

Taktak D, Bowker P. Lightweight, modular knee-ankle-foot orthosis for Duchenne muscular dystrophy: design, development, and evaluation. *Archives of Physical Medicine and Rehabilitation* 1995;**76**:1156-62.

Townsend 2016 {published data only}

Townsend EL, Bibeau C, Holmes T. Supported standing in boys with Duchenne muscular dystrophy. *Pediatric Physical Therapy* 2016;**28**(3):320-9.

Vignos 1996 {published data only}

Vignos P, Wagner M, Karlinchak B, Katirji B. Evaluation of a Program for Long Term Treatment of Duchenne Muscular Dystrophy. *Journal of Bone and Joint Surgery* 1996;**78**:1844-52.

Additional references

Bakker 2000

Bakker JP, de Groot IJ, Beckerman H, de Jong BA, Lankhorst GJ. The effects of knee-ankle-foot orthoses in the treatment of Duchenne muscular dystrophy: review of the literature. *Clinical Rehabilitation* 2000;**14**(4):343-59.

Birnkrant 2018a

Birnkrant DJ, Bushby K, Bann CM, Apkon SD, Blackwell A, Brumbaugh D, et al. Diagnosis and management of Duchenne muscular dystrophy, part 1: diagnosis, and neuromuscular, rehabilitation, endocrine, and gastrointestinal and nutritional management. *Lancet Neurology* 2018;**17**:251-67.

Birnkrant 2018b

Birnkrant DJ, Bushby K, Bann CM, Alman BA, Apkon SD, Blackwell A, et al. Diagnosis and management of Duchenne muscular dystrophy, part 2: respiratory, cardiac, bone health, and orthopaedic management. *Lancet Neurology* 2018;**17**:347-61.

Bunnell 1984

Bunnell WP. An objective criterion for scoliosis screening. *Journal of Bone and Joint Surgery. American Volume* 1984;**66**(9):1381-7.

Caulton 2004

Caulton JM, Ward KA, Alsop CW, Dunn G, Adams JE, Mughal MZ. A randomised controlled trial of standing programme on bone mineral density in non-ambulant children with cerebral palsy. *Archives of Diseases in Childhood* 2004;**89**(2):131-5.

Cheuk 2015

Cheuk DKL, Wong V, Wraige E, Baxter P, Cole A. Surgery for scoliosis in Duchenne muscular dystrophy. *Cochrane Database of Systematic Reviews* 2015, Issue 10. [DOI: [10.1002/14651858.CD005375.pub4](https://doi.org/10.1002/14651858.CD005375.pub4)]

Deconinck 2007

Deconinck N, Dan B. Pathophysiology of Duchenne muscular dystrophy: current hypotheses. *Pediatric Neurology* 2007;**36**(1):1-7.

Dooner 2007

Dooner R, Keddie A, Lomax D, Melville P, Morrow M, Wotherspoon L. Duchenne Muscular Dystrophy Scottish Physiotherapy Management Profile. www.apcp.org.uk/Portals/1/dmd_management_profile.pdf (accessed 19 February 2014).

Eagle 2002

Eagle M. Report on the Muscular Dystrophy Campaign workshop: exercise in neuromuscular diseases Newcastle, January 2002. *Neuromuscular Disorders* 2002;**12**(10):975-83.

Gibson 2009

Gibson SK, Sprod JA, Maher CA. The use of standing frames for contracture management for nonmobile children with cerebral palsy. *International Journal of Rehabilitation Research* 2009;**32**(4):316-23.

Glickman 2010

Glickman LB, Geigle PR, Paleg GS. A systematic review of supported standing programs. *Journal of Pediatric Rehabilitation Medicine* 2010;**3**(3):197-213.

GRADEpro GDT [Computer program]

McMaster University (developed by Evidence Prime). GRADEpro GDT. Hamilton (ON): McMaster University (developed by Evidence Prime), accessed 16 September 2019.

Higgins 2011

Higgins JP, Green S, editor(s). Cochrane Handbook for Systematic Reviews of Interventions Version 5.1 (updated March 2011). The Cochrane Collaboration, 2011. Available from handbook.cochrane.org.

Holland 2006

Holland D, Holland T. Taking a stand. *Rehabilitation Management* 2006;**19**(2):44-9.

King 2004

King G, Law M, King S, Hurley P, Hanna S, Kertoy M, et al. Children's Assessment of Participation and Enjoyment (CAPE) and Preferences for Activities of Children (PAC). San Antonio, TX: Harcourt Assessment, Inc 2004.

Kohler 2009

Kohler M, Clarenbach CF, Bahler C, Brack T, Russi EW, Block KE. Disability and survival in Duchenne muscular dystrophy. *Journal of Neurology, Neurosurgery and Psychiatry* 2009;**80**(3):320-5.

Landgraf 1999

Landgraf JM. Measuring pediatric outcomes in applied clinical settings: an update about the Child Health Questionnaire (CHQ). www.pro-newsletter.com/images/PDF/qol23_0.pdf (accessed 16 September 2014).

Lo Cascio 2014

Lo Cascio CM, Latshang TD, Kohler M, Fehr T, Bloch KE. Severe metabolic acidosis in adult patients with Duchenne muscular dystrophy. *Respiration* 2014;**87**(6):499-503.

Manzur 2008

Manzur AY, Kinali M, Muntoni F. Update on the management of Duchenne muscular dystrophy. *Archives of Disease in Childhood* 2008;**93**(11):986-90.

Mazess 1990

Mazess RB, Barden HS, Bisek JP, Hanson J. Dual-energy x-ray absorptiometry for total-body and regional bone-mineral and soft-tissue composition. *American Journal of Clinical Nutrition* 1990;**51**(6):1106-12.

McCormack 1988

McCormack HM, Horne DJ, Sheather S. Clinical applications of visual analogue scales: a critical review. *Psychological Medicine* 1988;**18**(4):1007-19.

Mendell 2012

Mendell JR, Shilling C, Leslie ND, Flanigan KM, al-Dahhak R, Gastier-Foster J, et al. Evidence-based path to newborn screening for Duchenne muscular dystrophy. *Annals of Neurology* 2012;**71**(3):304-13.

Paleg 2008

Glickman LB, Geigle PR, Paleg GS. A systematic review of supported standing programs. *Journal of Pediatric Rehabilitation Medicine: An Interdisciplinary Approach* 2010;**3**:197-213.

Pandya 1985

Pandya S, Florence JM, King WM, Robison JD, Oxman M, Province MA, et al. Reliability of goniometric measurements in patients with Duchenne muscular dystrophy. *Physical Therapy* 1985;**65**(9):1339-42.

Phillips 2001

Phillips MF, Quinlivan RC, Edwards RH, Calverley PM. Changes in spirometry over time as a prognostic marker in patients with Duchenne muscular dystrophy. *American Journal of Respiratory and Critical Care Medicine* 2001;**164**(12):2191-4.

Pin 2007

Pin TW. Effectiveness of static weight-bearing exercises in children with cerebral palsy. *Pediatric Physical Therapy* 2007;**19**(1):62-73.

Pope 2007

Pope PM. Severe and Complex Neurological Disability: Management of the Physical Condition. London: Elsevier, 2007.

Revman 2014 [Computer program]

Nordic Cochrane Centre, The Cochrane Collaboration. Review Manager 5 (Revman 5). Version 5.3. Copenhagen: Nordic Cochrane Centre, The Cochrane Collaboration, 2014.

Rivi 2014

Rivi E, Filippi M, Fornasari E, Mascia MT, Ferrari A, Costi S. Effectiveness of standing frame on constipation in children with cerebral palsy: a single-subject study. *Occupational Therapy International* 2014;**21**(3):115-23.

Taylor 2009

Taylor K. Factors affecting prescription and implementation of standing-frame programs by school-based physical therapists for children with impaired mobility. *Pediatric Physical Therapy* 2009;**21**(3):282-8.

Umphred 2013

Hallum A, Allen DD. Neuromuscular diseases. In: Umphred DA, Lazaro RT, Roller ML, Burton GU editor(s). *Umphred's Neurological Rehabilitation*. 6th Edition. St Louis: Elsevier, Mosby, 2013:521-70.

Vincent 2007

Vincent KA, Carr AJ, Walburn J, Scott DL, Rose MR. Construction and validation of a quality of life questionnaire for neuromuscular disease (INQoL). *Neurology* 2007;**68**(13):1051-7.

Wills 2007

Wills BP, Auerbach JD, Zhu X, Caird MS, Horn BD, Flynn JM, et al. Comparison of Cobb angle measurement of scoliosis radiographs with preselected end vertebrae: traditional versus digital acquisition. *Spine* 2007;**32**(1):98-105.

References to other published versions of this review
Pedlow 2015

Pedlow K, McDonough S, Lennon S, Kerr C, Bradbury I. Assisted standing for Duchenne muscular dystrophy. *Cochrane Database of Systematic Reviews* 2015, Issue 3. [DOI: [10.1002/14651858.CD011550](https://doi.org/10.1002/14651858.CD011550)]

CHARACTERISTICS OF STUDIES
Characteristics of excluded studies [ordered by study ID]

Study	Reason for exclusion
Alemdaroglu 2014	Methodology and design not eligible. A retrospective cohort study investigating the relationship between orthosis use and current functional level.
Bakker 1997	Methodology and design not eligible. A cohort study that reviewed the orthoses prescription pattern by physicians and evaluated the patient experience of orthosis use.
Bakker 2002	Methodology and design not eligible. A prospective cohort study that investigated predictive factors for loss of ambulation including muscle strength, range of motion, and scoliosis.
Garralada 2006	Methodology and design not eligible. A qualitative study that explored the views and the adjustment of families in relation to the use of KAFOs
Heckmatt 1985	Methodology and design not eligible. A retrospective cohort study that examined the impact of providing a lightweight ankle-foot orthosis on walking prolongation.
Hunt 1981	Methodology and design not eligible. A description of how to transfer a boy with DMD whilst a KAFO was being used.
Katz 2006	Methodology and design not eligible. A review paper that evaluated the evidence for using ambulatory KAFOs in children, including those with DMD.
Kinali 2007	Methodology and design not eligible. A retrospective cohort study that evaluated predictive factors for the development of scoliosis, including prolonged ambulated and glucocorticoid administration.
Main 2006	Methodology and design not eligible. A cohort study that investigated the difference in outcome between serial casting and surgery in relation to Achilles tendon length.
Rodillo 1988	Methodology and design not eligible. A retrospective cohort study that evaluated the impact of rehabilitation on the development of scoliosis.
Taktak 1995	Methodology and design not eligible. This study used a consecutive sample design to evaluate a new module KAFO with standard orthoses.

Study	Reason for exclusion
Townsend 2016	Methodology and design not eligible. This study used a case series design to determine the safety, efficacy and tolerability of standing devices for boys with DMD, focusing specifically muscle length and bone density.
Vignos 1996	Methodology and design not eligible. This retrospective cohort study evaluated the long term value of physical therapy operative treatment and bracing in the control of contractures.

DMD: Duchenne muscular dystrophy
 KAFO: knee ankle foot orthosis

APPENDICES

Appendix 1. Cochrane Neuromuscular Specialised Register (CRSWeb) search strategy

Search date: 5 September 2019

```
#1 duchenne AND INREGISTER
#2 standing NEAR3 frame* AND INREGISTER
#3 standing NEAR3 device* AND INREGISTER
#4 (stand or standing) NEAR3 support* AND INREGISTER
#5 stander AND INREGISTER
#6 standing NEAR3 wheelchair* AND INREGISTER
#7 (stand or standing) NEAR3 aid* AND INREGISTER
#8 kafo* AND INREGISTER
#9 knee ankle foot ortho* AND INREGISTER
#10 assist* NEAR3 stand* AND INREGISTER
#11 loss NEAR3 stand* AND INREGISTER
#12 tilt* table* AND INREGISTER
#13 "orthotic device" or "orthotic devices" or brace or braces AND INREGISTER
#14 #13 and (stand or standing) AND INREGISTER
#15 #2 or #3 or #4 or #5 or #6 or #7 or #8 or #9 or #10 or #11 or #12 or #14 AND INREGISTER
#16 #1 and #15 AND INREGISTER
```

Appendix 2. Cochrane central Register of Controlled Studies (CENTRAL) (CRSWeb) search strategy

Search date 5 September 2019

```
#1 duchenne AND CENTRAL:TARGET
#2 standing NEAR3 frame* AND CENTRAL:TARGET
#3 standing NEAR3 device* AND CENTRAL:TARGET
#4 (stand or standing) NEAR3 support* AND CENTRAL:TARGET
#5 stander AND CENTRAL:TARGET
#6 standing NEAR3 wheelchair* AND CENTRAL:TARGET
#7 (stand or standing) NEAR3 aid* AND CENTRAL:TARGET
#8 kafo* AND CENTRAL:TARGET
#9 knee ankle foot ortho* AND CENTRAL:TARGET
#10 assist* NEAR3 stand* AND CENTRAL:TARGET
#11 loss NEAR3 stand* AND CENTRAL:TARGET
#12 tilt* table* AND CENTRAL:TARGET
#13 "orthotic device" or "orthotic devices" or brace or braces AND CENTRAL:TARGET
#14 #13 and (stand or standing) AND CENTRAL:TARGET
#15 #2 or #3 or #4 or #5 or #6 or #7 or #8 or #9 or #10 or #11 or #12 or #14 AND CENTRAL:TARGET
#16 #1 and #15 AND CENTRAL:TARGET
```

Appendix 3. MEDLINE (OvidSP) search strategy

Database: Ovid MEDLINE(R) and Epub Ahead of Print, In-Process & Other Non-Indexed Citations and Daily (1946 to September 04, 2019)
 Search Strategy:

- 1 randomized controlled trial.pt. (488652)
- 2 controlled clinical trial.pt. (93265)
- 3 randomi#ed.tw. (583721)
- 4 placebo.ab. (200473)
- 5 drug therapy.fs. (2136487)
- 6 randomly.ab. (317408)
- 7 trial.ab. (475229)
- 8 groups.ab. (1949928)
- 9 or/1-8 (4540624)
- 10 exp animals/ not humans.sh. (4615097)
- 11 9 not 10 (3933179)
- 12 Muscular Dystrophy, Duchenne/ (5059)
- 13 duchenne.tw. (10686)
- 14 or/12-13 (11618)
- 15 (standing adj3 frame\$.mp. (127)
- 16 (standing adj3 device\$.mp. (131)
- 17 ((stand or standing) adj3 support\$2).mp. (647)
- 18 stander.mp. (111)
- 19 (standing adj3 wheelchair\$1).mp. (29)
- 20 (stand\$3 adj3 aid\$1).mp. (365)
- 21 kafo\$1.mp. (82)
- 22 knee ankle foot ortho\$.mp. (199)
- 23 (assist\$ adj3 stand\$3).mp. (761)
- 24 (loss adj3 stand\$3).mp. (739)
- 25 tilt\$ table\$.mp. (3291)
- 26 Orthotic Devices/ (6250)
- 27 braces/ (5334)
- 28 brace\$1.tw. (6343)
- 29 26 or 27 or 28 (14911)
- 30 29 and (stand or standing).mp. (568)
- 31 or/15-25,30 (6795)
- 32 11 and 14 and 31 (6)
- 33 14 and 31 (30)
- 34 remove duplicates from 33 (30)

Appendix 4. Embase (OvidSP) search strategy

Database: Embase (1974 to 2019 September 04)

Search Strategy:

- 1 crossover-procedure.sh. (60577)
- 2 double-blind procedure.sh. (165194)
- 3 single-blind procedure.sh. (36475)
- 4 randomized controlled trial.sh. (568805)
- 5 (random\$ or crossover\$ or cross over\$ or placebo\$ or (doubl\$ adj blind\$) or allocat\$).tw,ot. (1685633)
- 6 trial.ti. (280325)
- 7 or/1-6 (1863745)
- 8 exp animal/ or exp invertebrate/ or animal.hw. or non human/ or nonhuman/ (26434028)
- 9 human/ or human cell/ or human tissue/ or normal human/ (20194559)
- 10 8 not 9 (6303486)
- 11 7 not 10 (1643351)
- 12 limit 11 to (conference abstracts or embase) (1380034)
- 13 Duchenne muscular dystrophy/ (15436)
- 14 Duchenne.tw. (14836)
- 15 13 or 14 (18690)
- 16 (standing adj3 frame\$.mp. (229)
- 17 (standing adj3 device\$.mp. (139)
- 18 (standing adj3 support\$2).mp. (599)
- 19 stander.mp. (259)
- 20 exp foot orthosis/ (2978)
- 21 orthotics/ (3685)
- 22 brace/ (8859)

23 (or/20-22) and (stand or standing).mp. (955)
24 or/16-19,23 (2089)
25 12 and 15 and 24 (1)
26 15 and 24 (20)
27 remove duplicates from 26 (20)
28 limit 27 to (conference abstracts or embase) (18)

Appendix 5. CINAHL Plus (EBSCOhost) search strategy

Friday, September 06, 2019 10:36:25 AM

S41 S20 and S37 12

S40 S38 AND S39 1

S39 EM 20180301- 635,649

S38 S19 AND S20 AND S37 5

S37 S21 OR S22 OR S23 OR S24 OR S25 OR S26 OR S27 OR S28 OR S29 OR S30 OR S31 OR S32 OR S36 5,286

S36 S35 and (stand or standing) 891

S35 S33 OR S34 13,625

S34 brace or braces 2,421

S33 orthotic device* or orthos* 12,564

S32 tilt* table* 908

S31 loss N3 stand* 368

S30 assist* N3 stand* 1,814

S29 knee ankle foot ortho* 152

S28 kafo* 59

S27 stand* N3 aid* 838

S26 standing N3 wheelchair* 27

S25 stander 52

S24 (stand or standing) N3 support* 275

S23 standing N3 device* 56

S22 standing N3 frame* 71

S21 standing frames 67

S20 Duchenne and dystroph* 1,897

S19 S2 or S3 or S4 or S5 or S6 or S7 or S8 or S9 or S10 or S11 or S12 or S13 or S14 or S15 or S16 or S17 or S18 1,264,592

S18 ABAB design* 121

S17 TI random* or AB random* 299,617

S16 (TI (cross?over or placebo* or control* or factorial or sham? or dummy)) or (AB (cross?over or placebo* or control* or factorial or sham? or dummy)) 597,547

S15 (TI (clin* or intervention* or compar* or experiment* or preventive or therapeutic) or AB (clin* or intervention* or compar* or experiment* or preventive or therapeutic)) and (TI (trial*) or AB (trial*)) 231,767

S14 (TI (meta?analys* or systematic review*)) or (AB (meta?analys* or systematic review*)) 85,194

Assisted standing for Duchenne muscular dystrophy (Review)

Copyright © 2019 The Cochrane Collaboration. Published by John Wiley & Sons, Ltd.

S13 (TI (single* or doubl* or tripl* or trebl*) or AB (single* or doubl* or tripl* or trebl*)) and (TI (blind* or mask*) or AB (blind* or mask*)) 45,616

S12 PT ("clinical trial" or "systematic review") 166,169

S11 (MH "Factorial Design") 1,139

S10 (MH "Concurrent Prospective Studies") or (MH "Prospective Studies") 393,415

S9 (MH "Meta Analysis") 39,710

S8 (MH "Solomon Four-Group Design") or (MH "Static Group Comparison") 98

S7 (MH "Quasi-Experimental Studies") 11,183

S6 (MH "Placebos") 11,443

S5 (MH "Double-Blind Studies") or (MH "Triple-Blind Studies") 42,452

S4 (MH "Clinical Trials+") 266,130

S3 (MH "Crossover Design") 17,909

S2 (MH "Random Assignment") or (MH "Random Sample") or (MH "Simple Random Sample") or (MH "Stratified Random Sample") or (MH "Systematic Random Sample") 93,606

S1 (MH "Crossover Design") 17,909

Appendix 6. AMED (OvidSP) search strategy

Database: AMED (Allied and Complementary Medicine) (1985 to August 2019)

Search Strategy:

1 Randomized controlled trials/ (2251)

2 Random allocation/ (323)

3 Double blind method/ (732)

4 Single-Blind Method/ (137)

5 exp Clinical Trials/ (4110)

6 (clin\$ adj25 trial\$).tw. (7582)

7 ((singl\$ or doubl\$ or treb\$ or trip\$) adj25 (blind\$ or mask\$ or dummy)).tw. (3187)

8 placebos/ (626)

9 placebo\$.tw. (3396)

10 random\$.tw. (19575)

11 research design/ (2003)

12 Prospective Studies/ (1320)

13 meta analysis/ (299)

14 (meta?analys\$ or systematic review\$).tw. (4280)

15 control\$.tw. (38515)

16 (multicenter or multicentre).tw. (1127)

17 ((study or studies or design\$) adj25 (factorial or prospective or intervention or crossover or cross-over or quasi-experiment\$)).tw. (14048)

18 or/1-17 (59676)

19 (muscular dystrophy and duchenne).mp. (245)

20 (standing adj3 frame\$).mp. (28)

21 (standing adj3 device\$).mp. (26)

22 ((stand or standing) adj3 support\$2).mp. (72)

23 stander.mp. (2)

24 (standing adj3 wheelchair\$1).mp. (10)

25 (stand\$3 adj3 aid\$1).mp. (16)

26 kafo\$1.mp. (31)

27 knee ankle foot ortho\$.mp. (65)

28 (assist\$ adj3 stand\$3).mp. (67)

29 (loss adj3 stand\$3).mp. (20)

30 tilt\$ table\$.mp. (47)

31 exp orthotic devices/ (2118)

32 brace\$1.mp. (759)

Assisted standing for Duchenne muscular dystrophy (Review)

33 31 or 32 (2502)

34 33 and (stand or standing).mp. (153)

35 or/20-30,34 (457)

36 18 and 19 and 35 (3)

37 19 and 35 (8)

Appendix 7. PsycINFO (OvidSP) search strategy

Database: PsycINFO (1806 to August Week 4 2019)

Search Strategy:

1 (random\$ or rct or cct or factorial\$ or crossover\$ or cross over\$ or cross-over\$ or placebo\$ or (doubl\$ adj blind\$) or (singl\$ adj blind\$) or assign\$ or allocat\$ or volunteer\$.tw. (341095)

2 (duchenne adj5 dystroph\$.mp. (632)

3 (standing adj3 frame\$.mp. (31)

4 (standing adj3 device\$.mp. (9)

5 ((stand or standing) adj3 support\$2).mp. (175)

6 stander.mp. (28)

7 (standing adj3 wheelchair\$1).mp. (7)

8 (stand\$3 adj3 aid\$1).mp. (78)

9 kafo\$1.mp. (2)

10 knee ankle foot ortho\$.mp. (3)

11 (assist\$ adj3 stand\$3).mp. (92)

12 (loss adj3 stand\$3).mp. (126)

13 tilt\$ table\$.mp. (187)

14 orthotic device\$.mp. (174)

15 brace\$1.mp. (343)

16 14 or 15 (513)

17 16 and (stand or standing).mp. (32)

18 or/4-13,17 (727)

19 1 and 2 and 18 (0)

20 2 and 18 (0)

Appendix 8. ProQuest Dissertations & Theses Global search strategy

Search date 5 September 2019

all(standing OR stand OR stander) AND all(duchenne) AND all(KAFO OR "knee ankle foot orthosis" OR "tilt table" OR "orthotic device*" OR brace OR Braces OR wheelchair) AND (randomized OR randomised OR randomly) = 1 result.

Appendix 9. PEDro search strategy

Duchenne = 27 results. 0 selected to follow up based on title and abstract.

Appendix 10. Clinical trial registry databases

Duchenne and standing and orthosis. 0 results.

Appendix 11. Additional methods

The following are additional methods as specified in our protocol. We did not employ them in the review owing to the absence of included studies.

Data collection and analysis

Selection of studies

Two review authors (KP, SMcD) will independently screen titles and abstracts of all the potential studies we identify as a result of the search for inclusion and code them as 'retrieve' (eligible or potentially eligible/unclear) or 'do not retrieve'. We will identify and exclude duplicates and collate multiple reports of the same study so that each study rather than each report is the unit of interest in the review. We will retrieve full-text study reports, and two review authors (KP, SMcD) will independently screen the full text and identify studies for inclusion, and identify and record reasons for exclusion of the ineligible studies. We will resolve any disagreements through discussion or, if required, through consultation with a third review author (CK). We will report the selection process in sufficient detail to complete a PRISMA flow diagram and 'Characteristics of excluded studies' table.

Data extraction and management

We will use a data extraction form to extract study characteristics and outcome data; we will pilot this form on at least one study in the review. Two review authors (KP, CK) will extract study characteristics from included studies. We will note if any outcome data were not reported in a usable way. We will extract the following study characteristics.

1. Methods: study design, total duration of study, details of any 'run in' period, number of study centres and location, study setting, withdrawals and date of study
2. Participants: N, mean age, age range, gender, current residential country, severity of condition, diagnostic criteria, baseline characteristics, inclusion criteria and exclusion criteria
3. Interventions: intervention, number in each intervention group, comparison, concomitant medications and excluded medications
4. Outcomes: primary and secondary outcomes specified and collected and time points reported.
5. Results or main findings: primary and secondary results at all time points. Main findings will also report the number of previous fractures and the age at which scoliosis surgery was completed.
6. Others: conflicts of interest among main investigators and study funding source(s)

We will resolve disagreements by consensus or by involving a third person (SL). One review author (KP) will transfer data into Review Manager (Revman 2014). A second review author will check the outcome data entries (CK). A third review author (SL) will spot-check study characteristics for accuracy against the trial report.

When reports require translation, the translator will extract data directly using a data extraction form, or review authors will extract data from the translation provided. Where possible, a review author will check numerical data in the translation against the study report.

Assessment of risk of bias in included studies

Two review authors (KP, SL) will independently assess risk of bias for each study using the criteria outlined in the *Cochrane Handbook for Systematic Reviews of Interventions* (Higgins 2011). These authors will resolve disagreements by discussion or by involving another review author (SMcD).

We will assess the risk of bias according to the following domains: random sequence generation, allocation concealment, blinding of participants and personnel, blinding of outcome assessment, incomplete outcome data, selective outcome reporting and other bias.

We will grade each potential source of bias as high, low, or unclear and provide a quote from the study report together with a justification for our judgment in the 'Risk of bias' table. We will summarise the risk of bias judgements across different studies for each of the domains listed. We will consider blinding separately for different key outcomes where necessary (for example for unblinded outcome assessment, risk of bias for all-cause mortality may be very different than for a patient-reported pain scale). Where information on risk of bias relates to unpublished data or correspondence with a trialist, we will note this in the 'Risk of bias' table. When considering treatment effects, we will take into account the risk of bias for the studies that contribute to that outcome.

Assessment of bias in conducting the systematic review

We will conduct the review according to this published protocol and report any deviations from it in the 'Differences between protocol and review' section of the systematic review.

Measures of treatment effect

We will analyse dichotomous data as risk ratios with 95% confidence interval (CI) and continuous data as mean difference with 95% CI, or standardised mean difference with 95% CI for results across studies with outcomes that are conceptually the same, but measured in different ways. We will enter data presented as a scale with a consistent direction of effect.

We will undertake meta-analyses only where this is meaningful, that is if the treatments, participants and the underlying clinical question are similar enough for pooling to make sense.

We will narratively describe skewed data reported as medians and interquartile ranges.

Where a single trial reports multiple trial arms, we will include only the relevant arms.

Unit of analysis issues

We do not expect to have any cross-over or cluster-randomised controlled trials, and therefore do not expect any unit-of-analysis issues arising from these designs. If we do include a cross-over study, then, due to the progressive nature of DMD, we will analyse only the first arm if the treatment arm precedes the control. If a study has more than one treatment arm (for example standing frame A versus control and standing frame B versus control), and the study did not combine the active treatment arms for analysis, we will split the control treatment arm between active treatment arms to avoid double-counting.

Dealing with missing data

We will contact investigators or study sponsors to verify key study characteristics and to obtain missing numerical outcome data where possible (for example, when a study is available as an abstract only). Where this is not possible, and it is thought that the missing data introduces serious bias, we will use a sensitivity analysis to explore the impact of including such studies in the overall assessment of results. We will report and compare descriptively the characteristics of studies with missing outcome data with the characteristics of complete studies.

Assessment of heterogeneity

We will use the I^2 statistic to measure heterogeneity among the trials in each analysis. If we identify substantial unexplained heterogeneity, we will report both fixed-effect and random-effects results and explore possible causes by prespecified subgroup analysis.

Assessment of reporting biases

If we are able to pool more than 10 trials, we will create and examine a funnel plot to explore possible small-study biases. To further determine reporting bias, we will request study protocols and use the ORBIT framework to examine the impact of selective reporting bias.

Data synthesis

We will use a fixed-effect model, providing there is no evidence of heterogeneity of effect. We will use a random-effects model if there is evidence of statistical heterogeneity.

If the review includes more than one comparison that cannot be included in the same analysis, we will report the results for each comparison separately.

'Summary of findings' table

We will create a 'Summary of findings' table using the following outcomes.

1. Goniometry, change in value from baseline to 12 months
2. Pain (VAS), change in value from baseline to three months
3. Scoliosis (scoliometer), change in value from baseline to over 12 months
4. Bone density (DEXA), change in value from baseline to over 12 months
5. Respiratory function (FVC%), change in value from baseline to six to nine months
6. Quality of life (INQoL), change in value from baseline to 12 months
7. Adverse events

We will use the five GRADE considerations (study limitations, consistency of effect, imprecision, indirectness, and publication bias) to assess the quality of a body of evidence (studies that contribute data for the prespecified outcomes). We will use methods and recommendations described in Chapter 12 of the *Cochrane Handbook for Systematic Reviews of Interventions* (Higgins 2011) using GRADEpro software (GRADEpro GDT). We will justify all decisions to down- or upgrade the quality of studies using footnotes, and we will make comments to aid readers' understanding of the review where necessary.

Subgroup analysis and investigation of heterogeneity

We plan to carry out the following subgroup analyses.

1. Dosage of standing frame or orthoses use.
2. Age of participant (0 to 12 years, 13 to 17 years, 18 years plus).

We will use the formal test for subgroup interactions in Review Manager (Revman 2014).

Sensitivity analysis

We plan to carry out the following sensitivity analyses.

1. Repeat the analysis excluding any unpublished studies.
2. Repeat the analysis excluding studies at high risk of bias.
3. If there are one or more very large studies, repeat the analysis excluding those studies to explore to what degree they dominate the results.

Reaching conclusions

We will base our conclusions only on findings from the quantitative or narrative synthesis of included studies for this review. We will avoid making recommendations for practice, and our implications for research will suggest priorities for future research and outline the remaining uncertainties in the area.

CONTRIBUTIONS OF AUTHORS

All review authors contributed to the writing and reviewing of the protocol.

KP: protocol development, searches for trials, data extraction, development of final review, corresponding author.

SMcD: protocol development, searches for trials, data extraction, development of final review.

CK: protocol development, searches for trials, data extraction, development of final review.

SL: protocol development, development of the final review.

IB: protocol development, development of the final review.

DECLARATIONS OF INTEREST

IB: none known

CK: received no support from any organisation for the submitted work; she has received a research grant in partnership with Leckey.

SL: none known.

SMcD: none known

KP: was funded by Health and Social Care (HSC) Research and Development Northern Ireland for the completion of this Cochrane Review.

SOURCES OF SUPPORT

Internal sources

- No sources of support supplied

External sources

- The Research and Development Division of the Public Health Agency (Northern Ireland), UK.
Cochrane Fellowship Funding Award for Dr Katy Pedlow

DIFFERENCES BETWEEN PROTOCOL AND REVIEW

We did not implement the methods specified in our protocol for data extraction and analysis because the review included no eligible studies. We therefore could not complete various methods, including: data extraction, 'Risk of bias' assessment, measurement of treatment effect, assessment of heterogeneity and reporting bias, data synthesis or sensitivity analysis. We were unable to complete a 'Summary of findings' table or complete subgroup analysis. [Appendix 11](#) details additional methods planned in the protocol.