



## Performance gap and nZEB compliance of monitored Passivhaus in Northern Ireland, the Republic of Ireland and Italy

Colclough, S., Costanzo, V., Fabbri, K., Piraccini, S., Griffiths, P., & Hewitt, N. (2018). *Performance gap and nZEB compliance of monitored Passivhaus in Northern Ireland, the Republic of Ireland and Italy*. Paper presented at World Renewable Energy Congress 2018, London, United Kingdom.

[Link to publication record in Ulster University Research Portal](#)

### Publication Status:

Published (in print/issue): 03/08/2018

### Document Version

Author Accepted version

### General rights

Copyright for the publications made accessible via Ulster University's Research Portal is retained by the author(s) and / or other copyright owners and it is a condition of accessing these publications that users recognise and abide by the legal requirements associated with these rights.

### Take down policy

The Research Portal is Ulster University's institutional repository that provides access to Ulster's research outputs. Every effort has been made to ensure that content in the Research Portal does not infringe any person's rights, or applicable UK laws. If you discover content in the Research Portal that you believe breaches copyright or violates any law, please contact [pure-support@ulster.ac.uk](mailto:pure-support@ulster.ac.uk).

# Performance gap and nZEB compliance of monitored Passivhaus in Northern Ireland, the Republic of Ireland and Italy

S. Colclough, V. Costanzo, K. Fabbri, S. Piraccini, P. Griffiths, NJ Hewitt

**Abstract**— The near Zero Energy Building (nZEB) standard is required for all buildings from 2020. The Passive House (PH) standard is a well-established low-energy building standard, having been designed over 25 years ago, and could potentially be used to achieve the nZEB standard in combination with renewables.

By comparing measured performance with design predictions, this paper considers if there is a performance gap for a number of monitored properties and assesses if the nZEB standard can be achieved by following the well-established PH scheme. Analysis is carried out based on monitoring results from real buildings located in Northern Ireland, the Republic of Ireland and Italy respectively, with particular focus on the indoor air quality including the assumed and measured indoor temperature and heating periods for both standards as recorded during a full annual cycle.

An analysis is carried out also on the energy performance certificates of each of the dwellings to determine if they meet the near Zero Energy Buildings primary energy consumption targets set in the respective jurisdictions.

Each of the dwellings are certified as complying with the passive house standard, and accordingly have very good insulation levels, heat recovery and ventilation systems of greater than 75% efficiency and an airtightness of less than 0.6 air changes per hour at 50 Pa.

It is found that indoor temperature and relative humidity were within the comfort boundaries set in the design stage, while Carbon dioxide concentrations are sometimes higher than the values suggested by EN 15251 Standard for comfort class I especially in bedrooms.

**Keywords**—monitoring campaign, nZEB, passivhaus, performance gap.

## I. INTRODUCTION

The legislative framework existing in the EU is driving the development of low energy building standards including the recast Energy Performance of Buildings (EPBD) [1]. Near Zero Energy Buildings (nZEB) are required for public buildings from the end of 2018 and for all buildings from 2020. The Passive House has been shown to potentially be a key enabler for the nZEB standard, and as such offers potential, as it represents a well-proven methodology for compliance [2].

Analysis of case studies across a number of regions in the EU, where the deployment of the Passive House standard has successfully taken place, have demonstrated that considerable benefits are seen to have accrued [3]. These include the development of local markets, the creation of jobs and the consequential increase in innovation, enterprise, research and resources at a regional level. A key enabler for the adoption of the Passive House standard was the involvement of forward thinking municipalities.

Given the adoption in 2016 of the Passive House standard in Dun Laoghaire Rathdown Council, and the requirement to build ca 30,000 dwellings per annum to the nZEB standard in the Republic of Ireland, considerable potential exists for the architects, builders and equipment suppliers for the Passive House. This is particularly the case given that the nZEB standard has been demonstrated to be achievable via the passive house route at no extra cost compared to the current building regulations [4]-[5].

This monitoring and analysis exercise has quantified and highlighted some advantages offered by the Passive House standard in achieving nZEB. The Passive House has been demonstrated as providing a superior indoor climate whilst consuming approximately a third of the energy required for heating compared with contemporaneous dwellings built complying with the prevailing minimum building regulations.

Further, at a societal level, the data already gathered has the potential to facilitate an evidence-based discussion on the future of the housing stock. In particular, this study has shown that the Passive House requires only 38% of the energy required by houses

S.C. Shane Colclough, is a Research Fellow with the Centre for Sustainable Technologies, Ulster University, Newtownabbey, BT37 0QB Northern Ireland (e-mail: [s.colclough@ulster.ac.uk](mailto:s.colclough@ulster.ac.uk)).

V.C. Vincenzo Costanzo, is with the School of the Built Environment, University of Reading, Reading, RG1 5DU UK (phone: +44 1183787379; e-mail: [v.costanzo@reading.ac.uk](mailto:v.costanzo@reading.ac.uk)).

K. F. Kristian Fabbri is with the Department of Architecture, University of Bologna, Bologna, Italy (e-mail: [kristian.fabbri@unibo.it](mailto:kristian.fabbri@unibo.it)).

S. P. Stefano Piraccini is with the Department of Architecture, University of Bologna, Bologna, Italy (e-mail: [steafano.piraccini4@unibo.it](mailto:steafano.piraccini4@unibo.it)).

P.G. Philip Griffiths, is Professor at the Centre for Sustainable Technologies, Ulster University, Newtownabbey, BT37 0QB Northern Ireland (e-mail: [p.griffiths@ulster.ac.uk](mailto:p.griffiths@ulster.ac.uk)).

N.J. Hewitt, is Professor at the Centre for Sustainable Technologies, Ulster University, Newtownabbey, BT37 0QB Northern Ireland (e-mail: [nj.hewitt@ulster.ac.uk](mailto:nj.hewitt@ulster.ac.uk)).

built to the current building regulations. Further, the potential with respect to fuel poverty is self-evident given that space heating costs for a 1000 ft.<sup>2</sup> passive house can be approximately £200 per annum.

The implications of Brexit are yet to be fully understood within Northern Ireland and the UK [6]. One key aspect that needs to be considered is the possibility that the EU's Directive will not apply to the building stock in Northern Ireland. On the other hand, Italy will firmly be part of the EU in the years to come and as highlighted by some authors the techno-economic feasibility of nZEB can be achieved by energy-efficient solutions at both the building [7]-[8] and urban scales [9].

The present paper examines if existing passive houses built in the island of Ireland and in Italy perform as expected in the operational phase, and thus provide a "toolkit" for designers not only to achieve the nZEB energy requirements but also to achieve good Indoor Environmental Quality (IEQ) conditions in different climates. A special focus is given to bedroom conditions because the very strict requirements set by low-energy standards in terms of air infiltration and ventilation rates could be detrimental in terms of overheating and high CO<sub>2</sub> concentrations.

## II. METHODOLOGY

### A. Characteristics of the monitored houses

Ulster University has carried out monitoring of four passive houses in NI, hereafter called PH 1-4, and a number of passive houses in the Republic of Ireland, with PH 6 reported on in this paper. An evidence-based analysis has been employed to quantify the performances of the houses, carried out for a 12 month period including both the summer (2016) and the winter (2016/17) seasons.

In order to appreciate climate-induced differences on the performances of a passive house, a house located in the Mediterranean climate of Cesena in Italy (PH 5) has been monitored as well for an entire year (from April 2016 to April 2017).

TABLE I  
CHARACTERISTICS OF MONITORED PASSIVE HOUSES

House	Building Type	Location	Size (m <sup>2</sup> )
PH 1	2 storey, detached,	NI	158
PH 2	Bungalow, detached	NI	220
PH 3	Bungalow, detached	NI	145
PH 4	2 storey , detached	NI	247
PH 5	4 storey , detached	Italy	317
PH 6	Bungalow, Detached	RoI	182

All these buildings have been designed using the Passive House Planning Package (PHPP) software to comply with the Passivhaus standard prescriptions [10], namely:

- Space heating demand lower than 15 kWh m<sup>-2</sup>y<sup>-1</sup> or space heating load lower than 10W/m<sup>2</sup>.
- Total primary energy needs, including space heating, domestic hot water production and electrical appliances, lower than 120 kWh m<sup>-2</sup>y<sup>-1</sup>;
- Air infiltrations lower than 0.6 h<sup>-1</sup> at 50 Pa pressure difference;
- Mechanical Ventilation Heat Recovery (MVHR) system with efficiency higher than 75%;
- Opaque envelope components with U-value lower than 0.18 Wm<sup>-2</sup>K<sup>-1</sup> and glazing components with U-values lower than 0.8 Wm<sup>-2</sup>K<sup>-1</sup>;
- High efficiency lighting and equipment.

Over the 26-year period since the passive house standard was first espoused, many examples have been built throughout Europe and the world. After the implementation in the EU of the aforementioned EPBD Directive that prescribes the construction of nZEB from 2020, the opportunity afforded by utilising a well-established standard became apparent, and some authors started exploring its feasibility mainly by means of dynamic building performance simulations [11]-[12]-[13].

The Passive-On project [14] guidelines, as adopted by the Passivhaus Institut, introduced further prescriptions for houses located in warm climates:

- Energy demand for space heating/cooling lower than 15 kWh m<sup>-2</sup>y<sup>-1</sup>;
- Air infiltration lower than 1 h<sup>-1</sup> at 50 Pa pressure difference, if outdoor air temperature does not fall below 0°C.

Total primary energy needs should now account also for space cooling yet still have to remain below the 120 kWh m<sup>-2</sup>y<sup>-1</sup> threshold. The indoor maximum temperature requirements remain unaltered (no more than 10% of the hours in a year with temperatures exceeding 25°C in living areas).

### B. Monitored parameters

The Indoor Environmental Quality (IEQ) parameters monitored in all the houses are:

- indoor temperature (°C);
- relative humidity (%);
- CO<sub>2</sub> concentrations (PPM).

The metrics have been gathered at five minutes intervals, and then averaged over a one hour time step. The relevant measurement and accuracy ranges for every instrument are summarized in Table II. Threshold values have been set for each metric according to Passivhaus design requirements and national building regulations and the percentage of time when these thresholds are exceeded is considered as well. The heating energy data has been gathered via real-time monitoring for the houses located in the island of Ireland, whereas these figures were not available for the case study in Italy at the time of writing this paper.

TABLE II  
CHARACTERISTICS OF THE MONITORING INSTRUMENTS

Physical variable	Measurement range	Accuracy range
Indoor temperature	0-50°C	±0.3°C
Relative humidity	0-100%	±3%
CO <sub>2</sub> meter	0-5000ppm	±50ppm

## III. RESULTS AND DISCUSSION

### A. Indoor temperatures

Figs. 2 and 3 report on the proportion of time specific temperature ranges are experienced in the monitored bedrooms together with the relative average temperatures for the summer and winter respectively. Consideration of the summer temperatures allows investigation into the extent of overheating, while consideration of the winter temperatures allows the “strength” of the good thermal performance of passive house to be examined.

Considering the summer temperatures, PH 1-4, (Northern Ireland) & PH 6 (Republic of Ireland), experience more moderate temperatures than those exhibited by PH 5 (Italy). However, it is evident that – as can be seen in PH 2 –overheating can occur, albeit significantly below the PH threshold of 10% of occurrences of temperatures greater than 25°C in the year.

As for the Italian case (PH 5), temperatures are within the range of 20 to 24°C for almost 60% of time, with no occurrences of too cold temperatures (lower than 18°C). On the other hand, temperatures higher than 25°C are recorded for 19% of the time, thus exceeding the PH prescriptions about comfort conditions (even though this requirement strictly applies to living rooms only) and representing a potential overheating issue. The peak temperature recorded was of 27.8°C.

Significant variations in temperature are also exhibited in the PH bedrooms during winter. The average temperatures range from 16.9°C to 21.6°C. It is noted that the warmest bedroom (PH 4) is located in Northern Ireland, and that the bedroom located in Italy experiences a broader range of temperatures than PH 4.

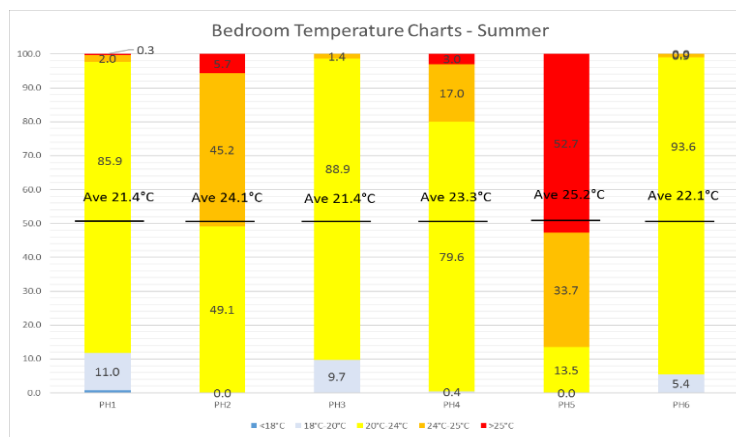


Fig. 1. Summer bedroom temperatures for PH 1-6

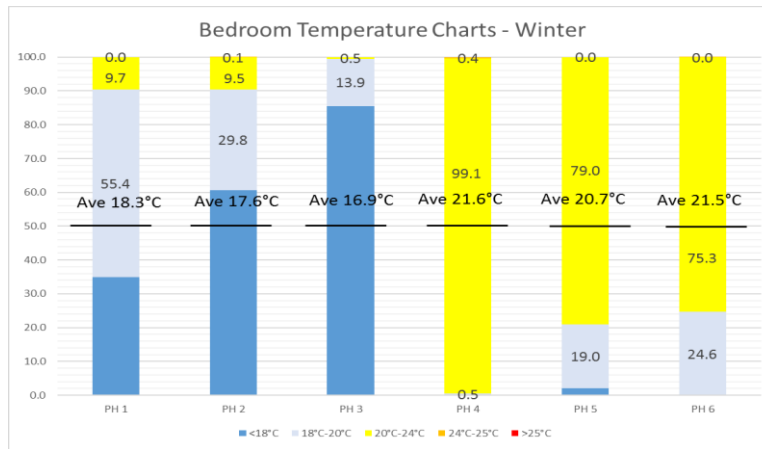


Fig. 2. Winter bedroom temperatures for PH 1-6

### B. Relative humidities

While no specific requirements are put in place from the Passivhaus Institute about relative humidity ranges, it is well known that this physical quantity determines thermal comfort in conjunction with temperature. Considering the ASHRAE 55-2013 Standard [15] as a reference, comfort conditions (i.e. relative humidity values within the boundaries of 30 to 60%) are experienced for at least 75% of the time in all the monitored passive houses (see figure 2).

RH {%}	PH 1	PH 2	PH 3	PH 4	PH 5	PH 6
Average	54.1	48.6	54.1	53.0	47.84	57.0
Max	71.0	59.0	66.0	66.0	76.64	69.0
Min	38.0	36.0	40.0	40.0	19.78	46.0
30-60 {%}	76%	100%	88%	87%	80%	75%

Fig. 3. Annual, Max, Min and frequency of occurrence of between 30% and 60% for bedroom Relative Humidity

Overall, it is found that relative humidity is not an issue for the passive houses under examination due to the MVHR system operation, ensuring a sufficient number of air changes per day.

### C. CO<sub>2</sub> concentrations

The indoor air quality (IAQ) in bedrooms is of particular interest when considering the overall indoor environment. This is because bedrooms are typically inhabited for an uninterrupted seven or eight hours per day during which time there is little adaptation of the indoor environment (e.g. by opening windows or doors). Recent publications have highlighted the link between sleep quality and indoor air quality [16]. In addition, given the reduced air infiltration of nZEB dwellings, there is potentially less ventilation in the buildings of the future especially when compared with the building standards of the past.

The Passivhaus Institute does not specify acceptable levels of CO<sub>2</sub> concentrations. However, carbon dioxide concentrations are the subject of increasing focus, with acceptable levels recognized as typically below 1000 PPM, with levels over 2500 ppm considered undesirable.

As can be seen from figure 4, the average carbon dioxide concentrations vary significantly, from the lowest in PH 2 (599 ppm), to the highest of 877 ppm (PH 4). Of particular note is the frequency of occurrence of relatively high carbon dioxide concentrations in PH 4 and PH 6. Given that the bedroom is occupied for only one third of the 24-hour period, the bedrooms clearly exhibit carbon dioxide concentrations in excess of 1000 PPM for the vast majority of the occupied period, with levels exceeding the undesirable 2500 PPM threshold in both PH 4 and PH 6.

Further investigation is needed to determine the root cause, as the mechanical heat recovery ventilation systems should be calibrated to provide sufficient ventilation (as is clearly the case in the remaining monitored dwellings).

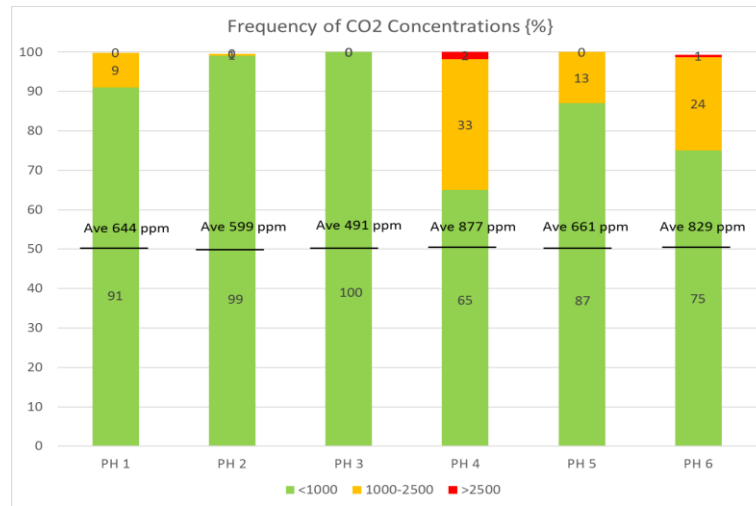


Fig. 4. Bedroom CO<sub>2</sub> concentrations for 12-month period

TABLE III  
ANNUAL AVERAGE VALUES OF THE IEQ METRICS

House	Indoor temperature (°C)	Relative humidity (%)	CO <sub>2</sub> concentrations (ppm)
PH 1	18.4	50.7	721.2
PH 2	17.6	48	596.8
PH 3	16.9	50.9	493.7
PH 4	21.6	48.2	946.9
PH 5	22.6	47.8	660.7

#### D. Energy demand and nZEB compliance

Whilst there is uncertainty caused by Brexit, the nZEB standard has been proposed for Great Britain and NI as requiring primary energy for regulated loads of less than or equal to 43.6 kWh m<sup>-2</sup>y<sup>-1</sup> (or 44 kWh m<sup>-2</sup>y<sup>-1</sup> to the nearest integer). Of the four Northern Ireland passive houses monitored, Energy Performance Certificates (EPC's) are available for three and indicate the "approximate Energy Use" primary energy unregulated loads are 40 kWh m<sup>-2</sup>y<sup>-1</sup> (PH 2), 39 kWh m<sup>-2</sup>y<sup>-1</sup> (PH 3) and 44 kWh m<sup>-2</sup>y<sup>-1</sup> (PH 4). While further more detailed analysis will be required once the nZEB standard for the UK is finalised, based on the primary energy use metric, the three passive houses are seen to comply with nZEB requirements.

For the Republic of Ireland, there is an indicative regulated load primary energy consumption of below 45 kWh m<sup>-2</sup>y<sup>-1</sup> for nZEB purposes (with the nZEB standard to be finalized in 2018). Monitoring of PH 6 has taken place over the 12-month period and the total purchased electricity was recorded at 4063 kWh. When this is multiplied by the primary energy conversion factor of 2.08 (to give 9575 kWh primary energy demand), the specific primary energy demand is seen to be 52.6 kWh m<sup>-2</sup>y<sup>-1</sup> (based on a floor area of 182 m<sup>2</sup>). This is below the 61.61 kWh m<sup>-2</sup>y<sup>-1</sup> predicted by the National energy rating software for regulated loads alone (which comprises heating, ventilation and fixed lighting). The overall consumed energy is approaching the requirements to comply with the forthcoming nZEB specifications with respect to regulated loads.

## IV. CONCLUSION

Monitoring campaigns carried out during a whole year period (2016/2017) in five passive houses located on the Island of Ireland (temperate maritime climate) and one passive house located in Italy (Mediterranean climate) showed that, overall, they perform as per design and represent a viable manner in which to achieve the nZEB target. It has been demonstrated that three of the dwellings already comply with the nZEB primary energy consumption targets, despite not having been designed with the target in mind.

Some potential issues have been recorded in bedrooms, especially for the Italian case, where temperatures are higher than the 25°C threshold for 19% of year (and 53% of the summer period), but also in the temperate maritime climate of Northern Ireland, where PH2 recorded temperatures of greater than 25°C for 6% of the time during the summer. In addition, the CO<sub>2</sub> concentrations can reach values as high as 2371 ppm, with PH 4 and PH 6 recording average CO<sub>2</sub> concentrations of greater than 800 ppm, and exceeding 1000 ppm for 35% of the time and 25% of the time respectively.

While the high summer temperatures in PH 2 are due to a lack of shading (deviating from the plan), the elevated carbon dioxide

concentrations may be correlated with a higher than expected occupancy density, or the operation of the MVHR system coupled with the intrinsic air tightness of the envelope prescribed by the Passivhaus standard. Future work should thus explore the use of different ventilation techniques, namely natural and hybrid ventilation, for passive cooling and IEQ purposes.

#### REFERENCES

- [1] EU, Directive 2010/31/EU of the European Parliament and of the Council of 19 May 2010 on the energy performance of buildings (recast), *Official Journal of European Union*, pp. 13–35, 2010.
- [2] A. Chel, A. Janssens, M. De Paepe, "Thermal performance of a nearly zero energy passive house integrated with the air-air heat exchanger and the earth-water heat exchanger", *Energy and Buildings*, vol. 96 (2015), pp. 53–63.
- [3] Passive House Institute (2015) PassREg: Final Report. Available at: <https://ec.europa.eu/energy/intelligent/projects/en/projects/passreg> [Accessed 8 November 2017]
- [4] S. Colclough, J. Mernagh, D. Sinnot, N.J. Hewitt, N.J. and P. Griffiths, "The cost of building to the near Zero Energy Building standard – a financial case study", *Mediterranean Green Buildings and Renewable Energy Forum*, July 31 to August 3, 2017.
- [5] S. Colclough, T. O'Leary, N.J. Hewitt and P. Griffiths, "The near Zero Energy Building standard and the Passivhaus standard – a case study", *Design to Thrive: Proceedings Volume 1, PLEA 2017 conference*, 3rd to 5th July 2017, NCEUB 2017. ISBN 978-0-9928957-5-4, pp. 385-392.
- [6] A. Pitts, "Passive House and Low Energy Buildings: Barriers and Opportunities for Future Development within UK Practice", *Sustainability*, vol. 9 (2017), ID 272.
- [7] A. Ferrante, M.T. Cascella, "Zero energy balance and zero on-site CO<sub>2</sub> emission housing development in the Mediterranean climate", *Energy and Buildings*, vol. 43 (2011), pp- 2002–2010.
- [8] G. Evola, G. Margani, L. Marletta, "Cost-effective design solutions for low-rise residential Net ZEBs in Mediterranean climate", *Energy and Buildings*, vol. 68 (2014), pp. 7–18.
- [9] N. Aste, R.S. Adhikari, M. Buzzetti, "Beyond the EPBD: The low energy residential settlement Borgo Solare", *Applied Energy*, vol. 87 (2010), pp. 629–642.
- [10] Passivhaus Institute, [http://passivehouse.com/02\\_informations/02\\_passive-house-requirements/02\\_passive-house-requirements.htm](http://passivehouse.com/02_informations/02_passive-house-requirements/02_passive-house-requirements.htm) [Accessed 11 November 2017].
- [11] A. Consoli, V. Costanzo, G. Evola, L. Marletta, "Refurbishing an existing apartment block in Mediterranean climate : towards the Passivhaus standard", *Energy Procedia*, vol. 111 (2017), pp. 397-406.
- [12] R. Bruno, N. Arcuri, C. Carpino, "The passive house in Mediterranean area: Parametric analysis and dynamic simulation of the thermal behaviour of an innovative prototype", *Energy Procedia*, vol. 82 (2015), pp. 533–539.
- [13] P.A. Fokaides, E. Christoforou, M. Ilic, A. Papadopoulos, "Performance of a Passive House under subtropical climatic conditions", *Energy and Buildings*, vol. 133 (2016), pp. 14–31.
- [14] B. Ford, R. Schiano-Phan, D. Zhongcheng, "Passive-On Project The Passivhaus standard in European warm climates: Part 3 Design guidelines for comfortable low energy homes", (2007).
- [15] ANSI/ASHRAE Standard 55-2013, "Thermal Environmental Conditions for Human Occupancy", Atlanta, 2013.
- [16] S. Piraccini, K. Fabbri, *Building a Passive House, The Architect's Logbook*. Springer, 2018, ISBN 978-3-319-69937-0.