



Time varying EEG Bandpower Estimation Improves 3D Hand Motion Trajectory Prediction Accuracy

Korik, A., Siddique, N., Sosnik, R., & Coyle, D. (2016). Time varying EEG Bandpower Estimation Improves 3D Hand Motion Trajectory Prediction Accuracy. In *Unknown Host Publication* TU Graz. <https://doi.org/10.3217/978-3-85125-467-9-77>

[Link to publication record in Ulster University Research Portal](#)

Published in:
Unknown Host Publication

Publication Status:
Published (in print/issue): 05/06/2016

DOI:
[10.3217/978-3-85125-467-9-77](https://doi.org/10.3217/978-3-85125-467-9-77)

Document Version
Publisher's PDF, also known as Version of record

General rights

The copyright and moral rights to the output are retained by the output author(s), unless otherwise stated by the document licence.

Unless otherwise stated, users are permitted to download a copy of the output for personal study or non-commercial research and are permitted to freely distribute the URL of the output. They are not permitted to alter, reproduce, distribute or make any commercial use of the output without obtaining the permission of the author(s).

If the document is licenced under Creative Commons, the rights of users of the documents can be found at <https://creativecommons.org/share-your-work/licenses/>.

Take down policy

The Research Portal is Ulster University's institutional repository that provides access to Ulster's research outputs. Every effort has been made to ensure that content in the Research Portal does not infringe any person's rights, or applicable UK laws. If you discover content in the Research Portal that you believe breaches copyright or violates any law, please contact pure-support@ulster.ac.uk

Time varying EEG Bandpower Estimation Improves 3D Hand Motion Trajectory Prediction Accuracy

A. Korik^{1*}, N. Siddique¹, R. Sosnik², D. Coyle¹

¹ISRC, Ulster University, Derry, U.K.; ²Hybrid BCI Lab, Holon Institute of Technology, Holon, Israel

* MS building, Ulster University, Strand Road, BT48 7JL, Derry, U.K. E-mail: korik-a@email.ulster.ac.uk

Introduction: Motion trajectory prediction (MTP) employs a time-series of band-pass filtered EEG potentials for reconstructing the three dimensional (3D) trajectory of limb movements with a multiple linear regression (mLR) block. While traditional multiclass classification methods use power values of mu (8-12Hz) and beta (12-30Hz) bands for limb movement based classification, recent MTP brain-computer interface (BCI) studies report the best accuracy using a 0.5-2Hz band-pass filter [1]. We recently [2] introduced a novel approach for MTP BCIs where the time-series of band-pass filtered EEG potentials were replaced with the time-series of power values of subject specific frequency band(s) prior to the application of mLR. Here we present an analysis of three subjects performing 3D arm movements and comparing the accuracy rates of the standard EEG potential model and the proposed spectrum power based approach.

Material, Methods and Results: The experiment involved two runs with six blocks/run and 15 movements/block (i.e., trials/block), between the home position and one of six target positions (Fig. 1A). Movements were synchronized with an auditory cue. Sixty-one EEG channels and kinematic data (x, y, and z hand position coordinates) were recorded simultaneously with a gHiamp80 (g.tec, Austria) and Kinect camera, respectively.

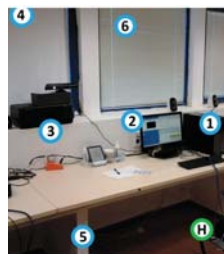


Figure 1A. Experimental setup. Home (H) and the six target positions (1-6).

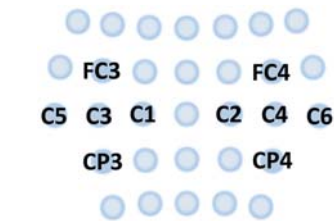


Figure 1B. Illustration of the thirty-one Laplace filtered EEG channels from which ten channels (see labels) were selected for kinematic data estimation.

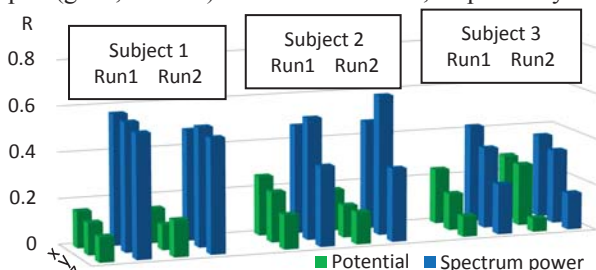


Figure 2. Comparison of achieved accuracy (i.e. R: correlation of registered and calculated test velocity trajectory components) for potential and spectrum power models in x, y, and z directions.

Thirty-one EEG channels were re-referenced with a Laplace filter (Fig. 1B). Data intervals with high level transient noise ($>|\pm 300\mu V|$) were removed along with their corresponding kinematic data. A 0.5-40Hz, 8th order Butterworth band-pass filter and independent component analysis (ICA) were applied for removing electrooculographic (EOG), electromyographic (EMG), and noise components. Ten ICA filtered EEG channels covering the sensorimotor cortex (Fig. 1B) were selected. For the potential model, channels were band-pass filtered in six specific bands (0.5-2Hz, 4-8Hz, 8-12Hz, 12-18Hz, 18-30Hz, and 30-40Hz). For the spectrum power model, signal bandpower was calculated in 500ms sliding window to replace the commonly used EEG potential time series. Parameter optimization is described in [2]. Correlation between registered and reconstructed velocity trajectories was assessed in an inner-outer (nested) cross-validation. The time lag, embedding dimension, frequency bands and EEG channels were optimized from the inner fold test correlations. The mean of the outer test fold correlations for the selected best architectures are reported for each subject and for each run (Fig. 2).

Discussion: Although the potential model provided best accuracy ($R\sim 0.2$) in 0.5-2Hz (low delta) band, the spectrum power model yielded significantly higher accuracy ($R\sim 0.4$) in the 4-8Hz (theta), 8-12Hz (mu), and 12-18Hz (low beta) bands. The current findings show parallelism with classical sensorimotor rhythm SMR-BCIs result that involve classification of different limbs e.g., left vs right hand movement, wherein the best accuracy is achieved using power values of mu (8-12Hz) and beta (16-28Hz) bands.

Significance: Significant improvements in the accuracy of 3D MTP can be achieved by replacing the time-series of delta band-pass filtered EEG potentials with the time-series of power values of the theta, mu, and beta bands. These bands, which are commonly used in classical SMR BCIs might encode movement trajectory relevant information, which is not accessible by the commonly used potential model [1] as a result of the approach used to time embed time series for the regression models. As the ultimate goal is to decode imagery of motion trajectory for movement-free control with a BCI, which is more challenging than decoding real movements, improvements in MTP approaches methods are necessary.

References

- [1] T. J. Bradberry, R. J. Gentili, and J. L. Contreras-Vidal, "Reconstructing three-dimensional hand movements from noninvasive electroencephalographic signals," *J. Neurosci.*, vol. 30, no. 9, pp. 3432-7, Mar. 2010.
- [2] A. Korik, N. Siddique, R. Sosnik, and D. Coyle, "3D Hand Movement Velocity Reconstruction using Power Spectral Density of EEG Signals and Neural Network," *35th Annual International Conference of the IEEE Engineering in Medicine and Biology S.*, Milan, 2015.