



Butterfly House

Sheridan, D., & Mcmenamin, D. (2011). Butterfly House. Design
http://www.irisharchitectureawards.ie/index.php/annual-awards/2012/butterfly_house/

[Link to publication record in Ulster University Research Portal](#)

Publication Status:

Published (in print/issue): 01/01/2011

Document Version

Publisher's PDF, also known as Version of record

General rights

The copyright and moral rights to the output are retained by the output author(s), unless otherwise stated by the document licence.

Unless otherwise stated, users are permitted to download a copy of the output for personal study or non-commercial research and are permitted to freely distribute the URL of the output. They are not permitted to alter, reproduce, distribute or make any commercial use of the output without obtaining the permission of the author(s).

If the document is licenced under Creative Commons, the rights of users of the documents can be found at <https://creativecommons.org/share-your-work/ccllicenses/>.

Take down policy

The Research Portal is Ulster University's institutional repository that provides access to Ulster's research outputs. Every effort has been made to ensure that content in the Research Portal does not infringe any person's rights, or applicable UK laws. If you discover content in the Research Portal that you believe breaches copyright or violates any law, please contact pure-support@ulster.ac.uk

ARCHITECTURE IRELAND

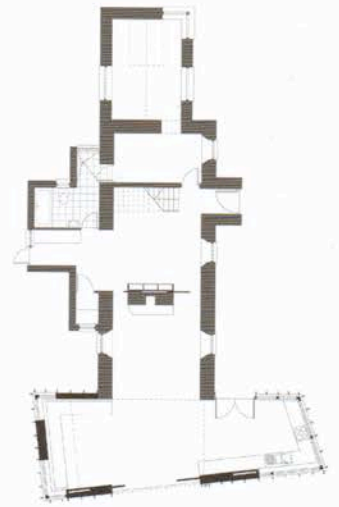
Public Architecture and Public Space
Umbrella Project, Temple Bar, Dublin
The Metals, Dun Laoghaire
Limerick City Art Gallery
Kevin Roche at 90
2012 Irish Architecture Awards
€10 (INC VAT)

263

The Journal of the Royal Institute
of the Architects of Ireland

RIAI

Public Architecture
and Public Space



BEST HOUSE EXTENSION - BUTTERFLY HOUSE

ARCHITECTS - LiD Architecture
CLIENT - Private

Client Comment

The extension is the centre of our home, always filled with activity, with visiting neighbours and family, and with changing light and colours making connections to the natural landscape around us. We love living here!



BEST INTERNATIONAL - CENTRAL PARK BRIDGE, LONDON OLYMPICS 2012

ARCHITECTS - Heneghan Peng Architects
CLIENT - Olympic Delivery Authority

Client Comment

The unique structural form celebrates both art and technology and through design excellence, high quality manufacturing and successful delivery provides a strong focal point in the park.



01



02



03



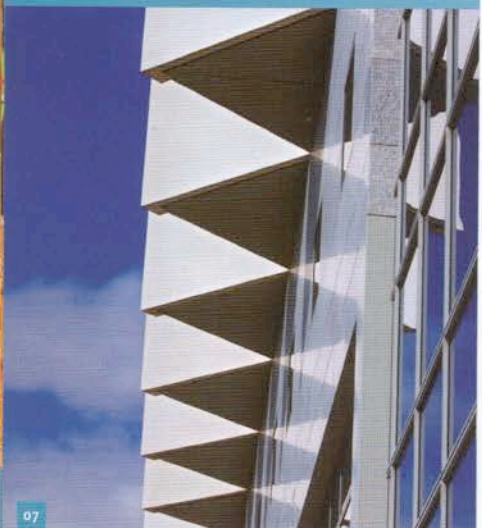
04



05



06



07

HIGHLY COMMENDED PROJECTS

ARCHITECTS

1. Howley Hayes Architects
2. McCullogh Mulvin Architects
3. Carson and Crushell Architects
4. Donal Colfer Architects
5. LiD Architecture
6. Steve Larkin Architects
7. Scott Tallon Walker Architects

PROJECT

- Ard na Sidhe Hotel
- Wood Quay Venue
- Emerging Practice
- Emerging Practice
- Garden Kitchen
- Teach Bhaile Eamoinn
- St. Vincent's Private Hospital

COMMENDED PROJECTS

ARCHITECTS

- John. J. O'Connell Architects
- Smith + Kennedy Architects
- PAC Studio
- Davey + Smith Architects
- Boyd Cody Architects
- Donaghy and Dimond Architects

PROJECT

- Fota, Enclosed Frameyard and Glasshouses Restoration, Phase 1
- The Lir Academy
- Emerging Practice
- Emerging Practice
- Back Yard
- Bricolage and Weathering

ARCHITECTS

- David Flynn Architect
- ODKM Architects
- DMVF Architects
- CAST Architecture
- Donoghue Corbett Architects
- Donal Colfer Architects
- Aughey O'Flaherty
- AXO Architects

PROJECT

- Emerging Practice
- Emerging Practice
- Cottage Cubed
- Extension, St. Mobhi Road, Glasnevin
- Old House/New House
- Extension, Portobello, Dublin
- House on Mount Anville
- Bell Tower