



Pan 360

Shipsides, D. (2008, Oct 11). Pan 360. <http://danshipsides.com/DshipsidesWeb/Pan%20360.html>

[Link to publication record in Ulster University Research Portal](#)

Publication Status:

Published (in print/issue): 11/10/2008

Document Version

Publisher's PDF, also known as Version of record

General rights

The copyright and moral rights to the output are retained by the output author(s), unless otherwise stated by the document licence.

Unless otherwise stated, users are permitted to download a copy of the output for personal study or non-commercial research and are permitted to freely distribute the URL of the output. They are not permitted to alter, reproduce, distribute or make any commercial use of the output without obtaining the permission of the author(s).

If the document is licenced under Creative Commons, the rights of users of the documents can be found at <https://creativecommons.org/share-your-work/ccllicenses/>.

Take down policy

The Research Portal is Ulster University's institutional repository that provides access to Ulster's research outputs. Every effort has been made to ensure that content in the Research Portal does not infringe any person's rights, or applicable UK laws. If you discover content in the Research Portal that you believe breaches copyright or violates any law, please contact pure-support@ulster.ac.uk

PAN 360
October 2009

THURS 17 September - SAT 17

Dan Shipsides

PAN 360 is an ongoing series of landscape based videos which are made by attaching a modified camera to a leash and whirling it through the space above and around the artist's body. Shot in location while pursuing other habitual activities such as rock climbing, the simple activity of production dissolves conventional landscape scenes or views into sequences of dramatic visual activity where the landscape image is literally put into a spin. The raw video-scapes and audio combine both the performative activity (of selecting location, spinning, speed, timing and stamina) with the beautiful concordant / discordant footage of the environment.

Shipsides pursues a creative relationship to space incorporating the experiential. He seeks ways to explore spaces often with a physical engagement and produce both rural and urban landscapes based on that experience. It aims to draw from, document or reflect an experience of "being there" whilst also linking to social and historical contexts and articulating a societal engagement with place.

Dan Shipsides was born in Lancashire, England in 1972. And currently lives and works in Belfast since 1995. Former co-director at Catalyst Arts and Bbeyond, Belfast. He is currently a researcher and lecturer at the School of Art & Design at the University of Ulster in Belfast. In 2004 Dan Shipsides was awarded the ACNI Major Artist Award, in 2000 won the Nissan Art award IMMA (Bamboo Support) Dublin. Recent national and international exhibitions include e.g. Tate Modern (*Figuring Landscapes*), Castlefield Gallery, Manchester (*Radical Architecture*), Void, Derry (*Echo Valley...*) Arnolfini, Bristol (*Elastic Frontiers*), Platform, Istanbul (*Hit & Run*), MCA, Sydney (*Sporting Life*). Smart Project Space, Amsterdam (*Endure*). South London Gallery (*Games & Theory*). www.danshipsides.com

Video stills courtesy of the artist:

Coir' a' Ghrunnda 360



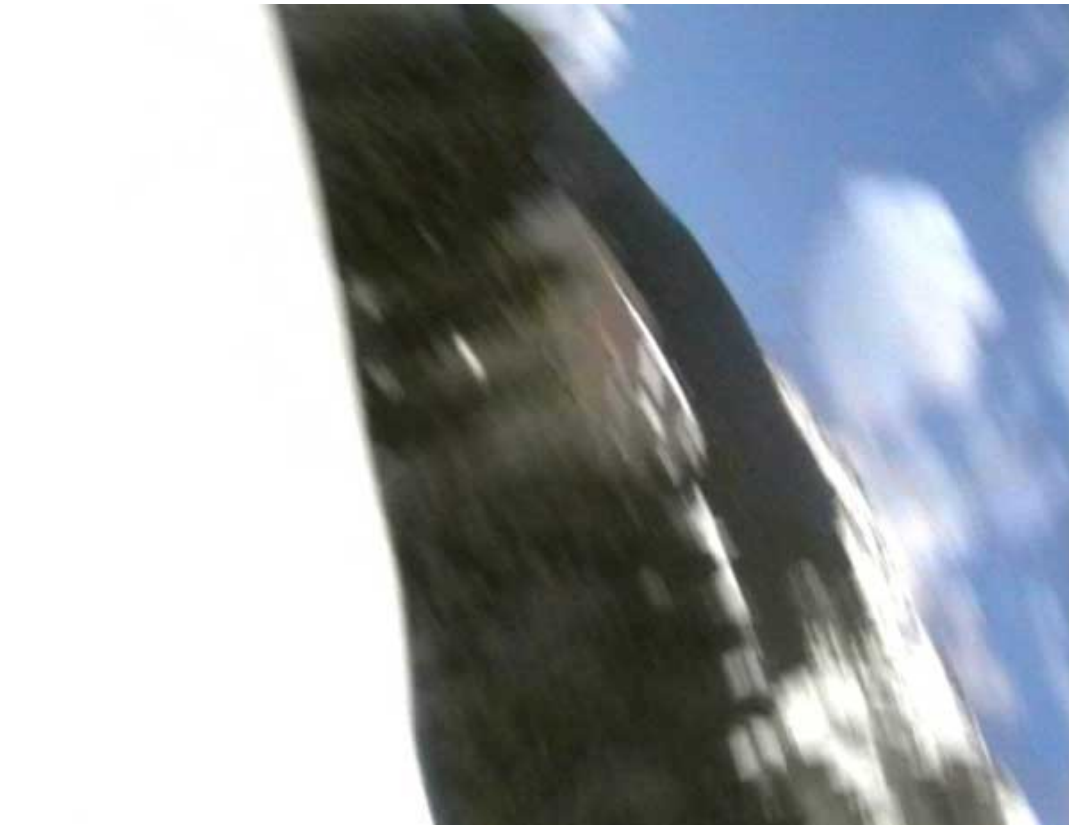
Ailladie, Burren 360



Kinder Scout 360



Spitzhorn 360



Cap de Antonio 360

