



The Cove / Vertical.Nature.Base.

Shipsides, D. (Author), & Batts, S. (Author). (2012). The Cove / Vertical.Nature.Base.. Performance
<http://verticalnaturebase.blogspot.com/>

[Link to publication record in Ulster University Research Portal](#)

Publication Status:

Published (in print/issue): 11/10/2012

Document Version

Author Accepted version

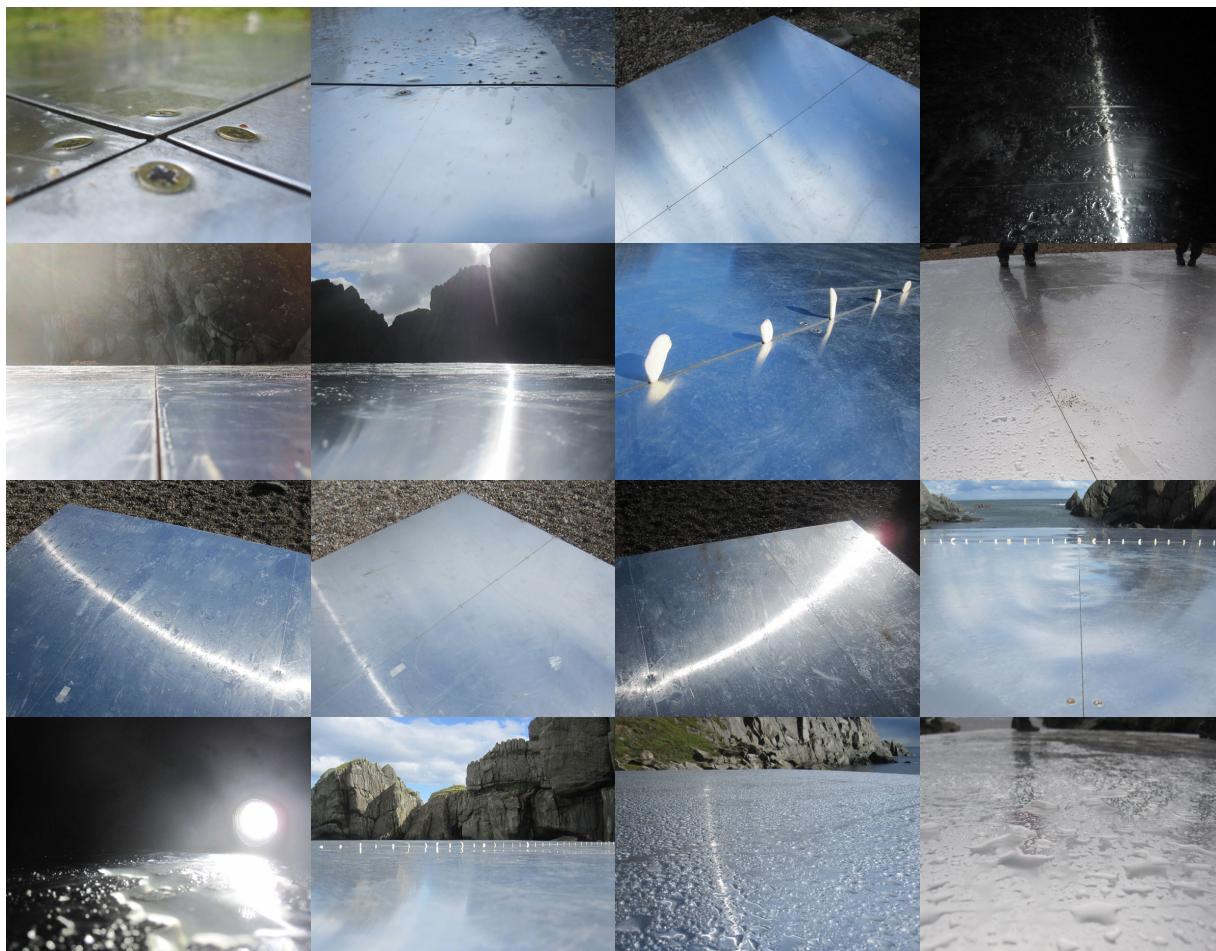
General rights

Copyright for the publications made accessible via Ulster University's Research Portal is retained by the author(s) and / or other copyright owners and it is a condition of accessing these publications that users recognise and abide by the legal requirements associated with these rights.

Take down policy

The Research Portal is Ulster University's institutional repository that provides access to Ulster's research outputs. Every effort has been made to ensure that content in the Research Portal does not infringe any person's rights, or applicable UK laws. If you discover content in the Research Portal that you believe breaches copyright or violates any law, please contact pure-support@ulster.ac.uk.

DAN SHIPSIDES (with Echo Echo Dance) - Vertical. Nature. Base. SURFACE RESPONSE

[Home](#)[CV & contact](#)[Texts](#)[Bibliography](#)[Projects](#)

The Platform. SURFACE RESPONSE

5 x 5 x 0.6 m
Dibond, Timber, plywood and fittings.

2011

I found myself interested in the surface of the platform whilst people used it but also when people were absent – reflections, the rain, stones and sand sitting on the surface, the noise, smears and scuffs of use.

It's very painterly as a material surface – but more so it absorbs the landscape around it through reflection – light.

The Platform was built in-situ then after the Cove phase dismantled, carried out by hand (over 1mile over coastal terrain) and reinstalled in a gallery. Everything was carried to the cove and away by hand - wood, dibond sheets, plywood, hardware, tools, tents, generators - everything. Fitzcarraldo style.

