



The Donacloney Furnishing Collection

Belford, P. (Photographer). (2019). The Donacloney Furnishing Collection: Contemporary furnishing collection inspired by The William Liddell Damask Plate archive . Design

[Link to publication record in Ulster University Research Portal](#)

Publication Status:

Published (in print/issue): 23/03/2019

General rights

Copyright for the publications made accessible via Ulster University's Research Portal is retained by the author(s) and / or other copyright owners and it is a condition of accessing these publications that users recognise and abide by the legal requirements associated with these rights.

Take down policy

The Research Portal is Ulster University's institutional repository that provides access to Ulster's research outputs. Every effort has been made to ensure that content in the Research Portal does not infringe any person's rights, or applicable UK laws. If you discover content in the Research Portal that you believe breaches copyright or violates any law, please contact pure-support@ulster.ac.uk.



EARTHED

BY
William Clark
SINCE 1736

THE DONACLONEY COLLECTION

A collaboration with Trish Belford

EARTHED BY WILLIAM CLARK

THE DONACLONEY COLLECTION

2019



www.earthedbywmclark.co.uk



EARTHED

BY
William Clark
SINCE 1736

THE DONACLONEY COLLECTION

A collaboration between Trish Belford and Earthed by William Clark, creating decorative textiles that respect the past in a distinct contemporary context.



www.earthedbywmclark.co.uk

THE DONACLONEY COLLECTION

Trish Belford and Duncan Neil formed their first working relationship in 2007 at The Ulster University. This new collection of fabrics are inspired by the Damask designs from The William Liddell archive recently revived by a National Heritage Lottery grant managed by Trish.

1600 fragile photographic glass plates were donated to The Ulster University by Ewart Liddell, the designs beautifully depicted many designs from the successful years of Northern Irish damask weaving designed and manufactured from the small village of Donacloney, Co Down, Northern Ireland. William Liddell and Company was formed in 1866, at a time when Northern Ireland was the largest linen producer in the world. Driven by industrialization William Liddell and Co were especially prosperous with their ideal position on the River Lagan providing export routes to the rest of the world. By the beginning of the 20th century the company had offices all over the world; London, Melbourne, Toronto, Buenos Aires, Christchurch, New York and Capetown. Famous for producing fine Damask linen designs, the company was awarded contracts for luxurious liners including the Titanic and leading stores such as Harrods, House of Fraser and Bloomingdales in the U.S. The designs illustrated on the photographic plates span a time between 1900's - 1970's.

For many years Trish has been in awe of the glass plates, the history and potential to revive some of the designs giving them an innovative contemporary airing. Working closely with Duncan a new fresh collection of prints have been created, ranging from stylish digital prints, traditional hand screen printing and keeping in line with the original Damask connection two beautiful fine Damask woven fabrics have been introduced to the Donacloney range, respecting tradition while firmly placing itself in a contemporary interior setting



LINEN

A sustainable fabric fit for the future

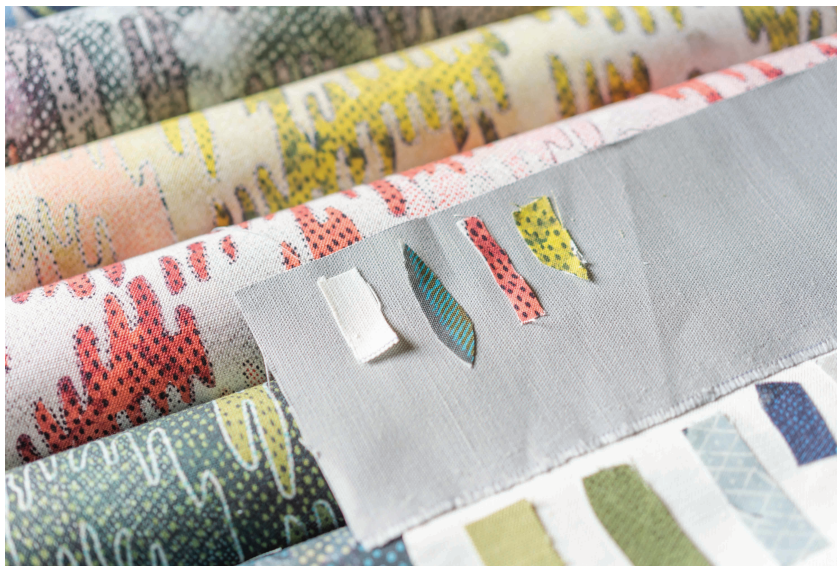
We are all becoming increasingly aware of the impact our buying decisions have on the planet and the future of our world. For too long it has been impossible for us to trace where most of the products we consume come from, particularly in regards to textiles. Thankfully, this is beginning to change and as consumers we can make informed choices.

All our linens come from a local supplier here in Northern Ireland, an accredited member of 'Masters of Linen.' This allows all the fabric we print and dye to be traced from field, to yarn spinner, to our weaver; all within Europe, complying with social ethics and produced sustainably, respecting the environment. In a world of global production our Irish linen is a transparent, locally produced product.

Flax takes 100 days to grow from seed to harvest, using 13 times less pesticide to grow than potatoes. It is naturally broken down (retted) in fields before it is scutched to extract the strong flax fibre. Linen uses considerably less water in production than cotton.

Linen has many positive attributes ranging from performance to environmental credentials including;

- Sustainable production - no irrigation, no GMO, no waste, natural field retting
- Biodegradable - 100% linen is completely biodegradable
- Proximity - raw flax, fibres and yarn travel short distances before being woven into beautiful linen
- Low carbon footprint
- Naturally anti bacterial
- Naturally moth resistant
- With proper care can last for decades
- and in the case of our Irish Linen you can rest assured it has been ethically produced.



All our printed fabrics are produced in house at our factory in Upperlands using digital technology and our screen printing table. Our base fabrics are woven right here in Northern Ireland carrying the seal of the Irish Linen Guild. We pride ourselves on producing 100% of our products in the U.K.



find out more at

www.irishlinen.co.uk

www.mastersoflinen.com

BETH

A bold and graphic floral combined with almost architectural geometric elements, reinterpreted through painting and digital design. The spectrum of colours digital print allows injects new life into this originally subtle design. Available on our 100% Irish Linen for drapes, cushions and roman blinds or our heavier linen union suitable for upholstery.





The Donaconey Collection



BETH - Edenmore



BETH - Clough

Repeat Size - 83cm (h) x 134cm (w)

Repeat Type - Square

Print Width - 137cm

Usable Width - 134cm

Woven & printed in Northern Ireland

Available on

100% Irish Linen
Suitable for



15,000 MD
210gsm

Linen Union
Suitable for



40,000 MD
340gsm

Care Instructions



A collaboration between Trish Belford & Earthed by William Clark



BETH - Drumroe



BETH - Gleanmor



BETH - Clonduff

Available on

100% Irish Linen
Suitable for



15,000 MD
210gsm

Linen Union
Suitable for



40,000 MD
340gsm

Care Instructions



ZIG ZAG

An element of the Beth design, these geometric zig zags bring a slightly more masculine edge to sheers. This beautiful contemporary lace makes a sophisticated addition to any window; as the main focus of window dressing or complimenting curtains.





The Donacloney Collection



ZIG ZAG - Moygannon

Repeat Size - 83cm (h) x 134cm (w)

Repeat Type - Square

Print Width - 137cm

Usable Width - 134cm

Weight - 71gsm

Woven in the UK

Composition - 95% Cotton, 5% Polyester

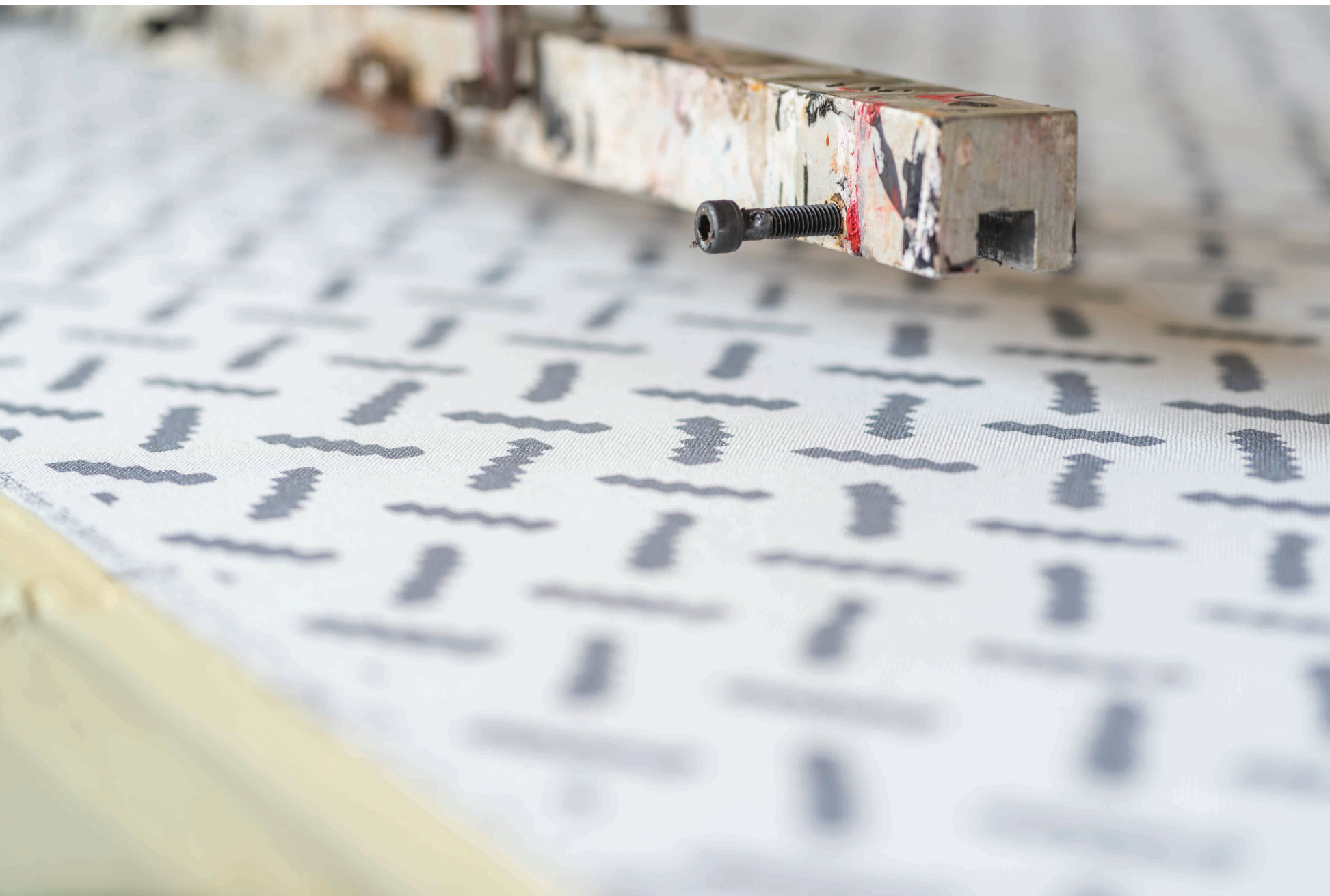
Suitable for



Care Instructions

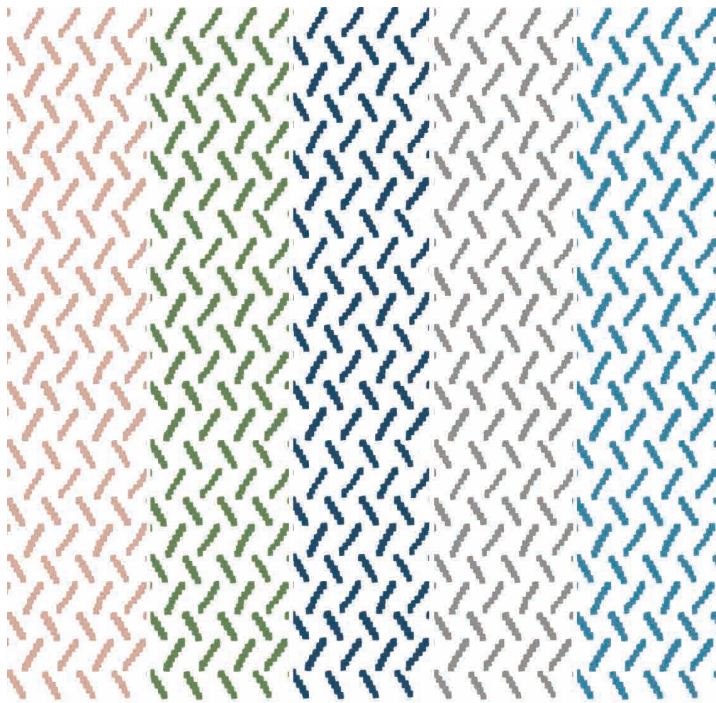






TIC TAC

A bold and graphic floral combined with almost architectural-
al geometric elements, reinterpreted through painting and
digital design. The spectrum of colours digital print allows
injects new life into this originally subtle design



Available Colours
Banroe Eden Gorm Carrick Speir
Custom colours can be produced for a minimum order of 15m + set up fee
Repeat Size - 83cm (h) x 134cm (w)

Repeat Type - Square

Print Width - 137cm

Usable Width - 134cm

Woven & printed in Northern Ireland

Available on

100% Irish Linen
Suitable for

15,000 MD
210gsm

Linen Union
Suitable for

40,000 MD
340gsm

Care Instructions





DONNA

A quirky leaf pattern with flavours of Japanese and Scandinavian design, this print again combines geometric shapes and graphic flora, with hand painted dots bringing a rich texture to the ground. Available on our 100% Irish Linen for drapes, cushions and roman blinds or our heavier linen union suitable for upholstery.



The Donacloney Collection



DONNA - Clonlee



DONNA - Kilmore

Repeat Size - 72cm (h) x 134cm (w)

Repeat Type - Square

Print Width - 137cm

Usable Width - 134cm

Woven & printed in Northern Ireland

Available on

100% Irish Linen
Suitable for



15,000 MD
210gsm

Linen Union
Suitable for



40,000 MD
340gsm

Care Instructions





DONNA - Drumroe



DONNA - Carrickalane



DONNA - Gleanmor

Available on

100% Irish Linen
Suitable for



15,000 MD
210gsm

Linen Union
Suitable for



40,000 MD
340gsm

Care Instructions





The Donacloney Collection



A collaboration between Trish Belford & Earthed by William Clark

TWIST

Playful and graceful at the same time, this beautiful contemporary lace makes a sophisticated addition to any window; as the main focus of window dressing or complimenting curtains.





The Donacloney Collection



Repeat Size - 42cm (h) x 42cm (w) - 3.5 repeats in width

Repeat Type - Square

Cloth Width - 150cm

Usable Width - 146cm

Weight - 75gsm

Woven in the UK

Composition - 95% Cotton, 5% Polyester

Suitable for



Care Instructions



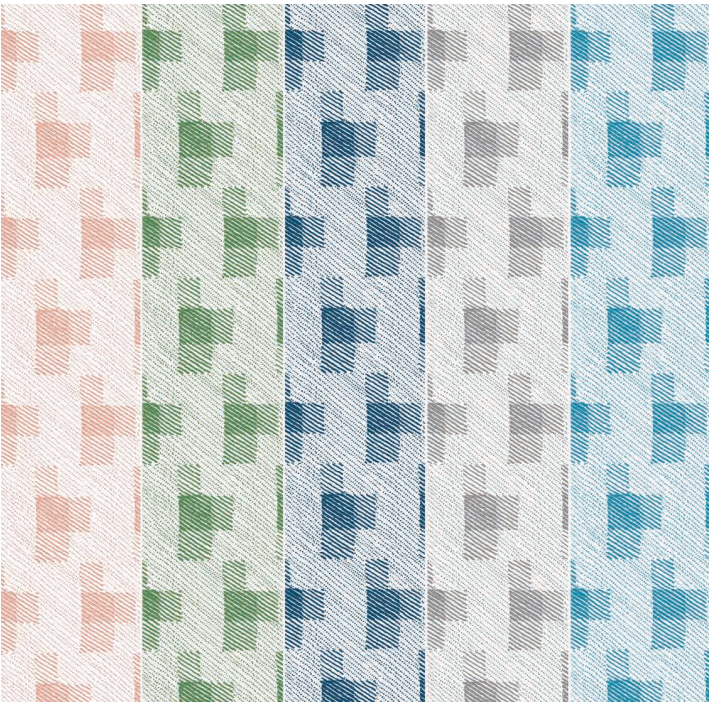


DASH

Inspired by shading on the glass plates, this hand drawn screen print creates an almost woven look, simply beautiful on it's own and the perfect co-ordinate for our statement prints.



The Donacloney Collection



Available Colours

Banroe Eden Gorm Carrick Speir

Custom colours can be produced for a minimum order of 15m + set up fee

Repeat Size - 83cm (h) x 134cm (w)

Repeat Type - Square

Print Width - 137cm

Usable Width - 134cm

Woven & printed in Northern Ireland


Available on

100% Irish Linen
Suitable for



15,000 MD
210gsm

Linen Union
Suitable for



40,000 MD
340gsm

Care Instructions





The Donacloney Collection



A collaboration between Trish Belford & Earthed by William Clark

ANNA

A supersized abstract floral, packed with hand painted textures creating an abundance of beautiful colour to be enrich any space. Available on our 100% Irish Linen for drapes, cushions and roman blinds or our heavier linen union suitable for upholstery.





The Donacloney Collection



ANNA - Kilmore



ANNA - Lisboy

Repeat Size - 97cm (h) x 134cm (w)

Repeat Type - Square

Print Width - 137cm

Usable Width - 134cm

Woven & printed in Northern Ireland

Available on

100% Irish Linen
Suitable for



15,000 MD
210gsm

Linen Union
Suitable for



40,000 MD
340gsm

Care Instructions





ANNA - Gleanmor



ANNA - Mullabrack



ANNA - Drumroe

Available on

100% Irish Linen
Suitable for



15,000 MD
210gsm

Linen Union
Suitable for



40,000 MD
340gsm

Care Instructions





INSPIRED TO CREATE?

With our in house design service we can help create your ideas on fabric; bring us your design or idea and we will prepare to print. Printing in house allows short runs of your designs, producing customised fabrics by screen or digital print; whichever is the best solution for your project. Services offered include;

Design Origination
Sampling
Colour Separation
Colour Matching
Digital Print
Screen Print
Metallics

Contact us with the details to the right to discuss your ideas and how we can help make them happen.

(T&C's apply, see our website)



EARTHED

BY
William Clark
SINCE 1736

Born from 300 years of textile history and experience at William Clark and Sons, Earthed is our latest spark of innovation established in 2016, creating contemporary interior fabrics for use in soft furnishings. We strive to be considerate to our environment and we exist to bring evocative colours and patterns to your home.

CONTACT

www.earthedbywmclark.co.uk

e-mail - info@earthedbywmclark.co.uk

t: +44 (0)2879 547200

Facebook @earthedfabrics
Instagram @earthedfabrics
Twitter @earthedfabrics

Earthed, William Clark & Sons Ltd
72 Upperlands, Maghera, Co. Londonderry
Northern Ireland, BT46 5RZ

William Clark
SINCE 1736

Proud members of the

Guild